

List of Tables and Charts for the ILO Background Paper

Table 1: Changes in GINI Coefficients in Selected Developing Countries

Table 2: Poverty Rates in Developing Countries, 1970-1998

Table 3: Real GDP per Worker and Real Compensation per Worker in Latin America, 1980-1998

Table 4: Decomposition of Economic Growth into Productivity Growth and Growth in Labour Market Variables, in Developing Countries, Based on Penn world Table Estimates, 1970-1998

Table 5: Decomposition of GDP per Capita Growth into Labour Productivity Growth and Employment to Population Ratio Growth in Developing Countries, Based on KILM-GGDC Estimates, 1970-1998

Table 6: Decomposition of GDP per Capita Growth into Productivity Growth and Growth in Labour Market Variables, in Developing Countries, Based on Penn World Table Estimates, 1970-1998

Table 7: Decomposition of GDP per Capita Growth into Labour Productivity Growth and Employment to Population Ratio Growth in Developing Countries, Based on KILM-GGDC Estimates, 1970-1998

Table 8: Multiple Regression Results on the Relationship Between Poverty Incidence, Labour Productivity and Income Inequality, Using Penn World Table Estimates, 1970-1998

Table 8a: Multiple Regression Results on the Relationship Between Poverty Incidence, Labour Productivity and Income Inequality, Using KILM-GGDC Estimates, 1970-1998

Table 9: Real GDP per Worker levels, KILM-GGDC and Penn World Table Estimates, 1998

Table 10: Trends in the Index of Human Development, 1975-2000

Table 11: Regression Results on the Relationship Between Real Wage Growth and Labour Productivity Growth

Table 12: Comparison of Labour Productivity Growth Rates, Based on Hours and Employment in Selected Developing Countries, 1960-2000

Table 13: GDP Shares by Continent in 1998

Table 14: Estimation of Poverty Incidence to Labour Productivity Elasticities

Chart 1: Relationship Between GDP per Worker Growth and the Change in the \$1 a day Poverty Rate in Developing Countries, 1970-1998

Chart 2: Relationship Between GDP per Worker Growth and the Change in the \$2 a day Poverty Rate in Developing Countries, 1970-1998

Chart 3: Relationship Between GDP per Worker and the \$1 a day Poverty Rate in Developing Countries, 1998

Chart 4: Relationship Between GDP per Worker and the \$2 a day Poverty Rate in Developing Countries, 1998

Chart 5: Relationship Between Real GDP per Worker and the Human Poverty Index in Developing Countries, 2000

Chart 6: Relationship Between Real GDP per Worker and the Human Development Index in Developing Countries, 2000

Chart 7: Relationship Between Real GDP per Worker (GGDC Estimates) and the Human Development Index in Developing Countries, 2000

Chart 8: Relationship Between Real GDP per Worker (GGDC Estimates) and the Human Poverty Index in Developing Countries, 2000

Chart 9: Relationship Between Real GDP per Worker and Real Compensation per Worker Average Annual Growth Rates in Latin America for the 1980-1998 Period

Table 1: Changes in GINI Coefficients in Selected Developing Countries

	Income Definition	Closest Year to 1970	GINI coefficient	Closest Year to 1998	GINI coefficient	Average annual change, %
Latin America						
Brazil	Gross Income	1970	57.6	1996	58.1	0.03
Chile	Gross Income	1971	46.0	1996	56.4	0.82
Colombia	Gross Income	1970	52.0	1992	49.2	-0.25
Costa Rica	Gross Income	1971	44.4	1983	47.0	0.48
Dominican Republic	Gross Income	1976	45.0	1992	49.0	0.53
Ecuador	Gross Income	1968	38.0	1994	53.0	1.29
Jamaica	Expenditure	1971	41.3	1996	36.4	-0.50
Mexico	Gross Income	1969	58.0	1996	52.8	-0.35
Panama	Gross Income	1969	48.0	1989	56.5	0.82
Peru	Gross Income	1971	55.0	1997	50.5	-0.32
El Salvador	Gross Income	1977	48.4	1995	50.0	0.18
Venezuela	Gross Income	1971	47.7	1990	44.4	-0.37
Asia						
Bangladesh	Expenditure	1973	39.2	1996	33.6	-0.67
China (rural)	Net Income	1978	21.2	1997	32.7	2.29
China (urban)	Net Income	1978	16.0	1995	28.0	3.35
Hong Kong	Gross Income	1971	40.9	1996	52.0	0.97
Indonesia	Expenditure	1970	30.7	1993	31.7	0.14
India	Net Expenditure	1970	30.4	1992	32.0	0.24
India (rural)	Net Expenditure	1969	30.7	1997	30.1	-0.07
India (urban)	Net Expenditure	1969	32.9	1997	36.1	0.33
Korea	Gross Income	1970	33.3	1988	33.6	0.06
Sri Lanka	Expenditure	1970	31.2	1995	34.4	0.40
Malaysia	Gross Income	1970	50.0	1984	48.0	-0.29
Pakistan	Expenditure	1970	29.9	1996	31.2	0.16
Philippines	Gross Income	1971	49.4	1997	49.6	0.01
Singapore	Gross Income	1973	41.0	1993	37.8	-0.40
Thailand	Gross Income	1971	49.9	1996	45.3	-0.39
Taiwan	Net Income	1970	29.4	1996	31.7	0.29
Africa						
Ethiopia	Net Expenditure	1981	32.4	1996	44.2	2.09
Tanzania	Net Expenditure	1969	39.0	1991	59.0	1.90

Source: World Institute for Development Economics Research. *World Income Inequality Database, V 1.0*. Available at www.wider.unu.edu/wiid/wiid.htm.

Note: The GINI coefficient estimates for the earliest period and the latest period are rarely from the same source. Following the instructions from the database we created longer time series by using more than one source, but with the same reference unit, the same income definition and the same quality, to allow for co

Table 2: Poverty Rates in Developing Countries, 1970-1998

	Poverty Rates \$1 per day (per cent of population)					Poverty Rates \$2 per day (per cent of population)				
	Sala-i-Martin estimates				World Bank estimates	Sala-i-Martin estimates				World Bank estimates
	1970	1980	1990	1998		1970	1980	1990	1998	
Bangladesh	28	29	13	5	29.1 (1996)	59	64	49	34	77.8 (1996)
China	27	20	10	3	18.8 (1999)	74	56	36	19	52.6 (1999)
Hong Kong	0	0	0	0	n/a	2	0	0	0	n/a
India	21	17	5	1	44.2 (1997)	59	54	32	14	86.2 (1997)
Indonesia	37	7	0	0	7.7 (1999)	69	36	10	3	55.3 (1999)
Korea, Rep.	2	0	0	0	<2 (1993)	19	3	0	0	<2 (1993)
Malaysia	14	1	0	0	n/a	32	14	5	1	n/a
Nepal	27	28	20	15	37.7 (1995)	72	69	57	49	82.5 (1995)
Pakistan	13	11	3	2	31 (1996)	50	45	28	23	84.7 (1996)
Philippines	16	4	3	1	n/a	34	22	21	17	n/a
Singapore	0	0	0	0	n/a	0	0	0	0	n/a
Sri Lanka	14	6	1	0	6.6 (1995)	41	29	16	4	45.4 (1995)
Taiwan	0	0	0	0	n/a	7	0	0	0	n/a
Thailand	19	9	0	0	<2 (1998)	38	26	9	5	28.2 (1998)
Barbados	1.3	0.4	0.4	0.3	n/a	12.1	4.3	2.6	1.7	n/a
Bolivia	0.2	0	5.5	23.8	14.4 (1999)	7.2	2.2	26.5	40.1	34.3 (1999)
Brazil	13.7	1.9	2.2	1	11.6 (1998)	31	15.4	16.5	12.9	26.5 (1998)
Chile	0.6	0.5	0.5	0	<2 (1998)	10.4	9.9	10.1	2.2	8.7 (1998)
Colombia	3.8	1.8	3	3.5	19.7 (1998)	25.1	16.3	17.2	17	36 (1998)
Costa Rica	1.8	0.4	0.8	0.5	12.6 (1998)	14.9	8.3	11.2	9.2	26 (1998)
Dominican Republic	10.4	2.3	3.9	0.3	3.2 (1996)	31.6	18.1	22.6	8.4	16 (1995)
Ecuador	6.5	0.2	0.1	0.1	20.2 (1995)	28.6	7.6	13.9	13.6	52.3 (1995)
El Salvador	0.5	1.1	4	2.5	21 (1998)	12.5	15.2	21.6	16.8	4.5 (1998)
Guatemala	5.5	2.1	8.6	11.3	10 (1998)	31.6	22.1	28.5	25.1	33.8 (1998)
Guyana	1.8	0.9	5.5	0.9	n/a	17.2	12.5	27.2	12.8	n/a
Honduras	0.2	0.5	13.3	30.1	24.3 (1998)	10.3	13.1	36.7	47.2	45.1 (1998)
Jamaica	9.9	4.7	0.3	0.2	3.2 (1996)	23	21.4	8.1	6.1	25.2 (1996)
Mexico	5.8	0.2	0.1	0	15.9 (1998)	20.2	7.1	4.5	1.8	37.7 (1998)
Nicaragua	0	0	6.9	26.6	n/a	0.1	1.6	28.8	47.3	n/a
Panama	11.5	3.8	3.5	0.6	14 (1998)	26.5	18.2	17.9	10	29 (1998)
Paraguay	22.8	15.4	13.6	12.8	19.5 (1998)	39	24.4	22.8	22.3	49.3 (1998)
Peru	0.1	0	1.3	1	15.5 (1998)	6.6	2.9	15.3	12.5	41.4 (1998)
Trinidad & Tobago	13.2	0.1	0.1	0.1	12.4 (1992)	21.6	1.7	0.4	0.1	39 (1992)
Uruguay	0	0	0	0	<2 (1989)	2	0.4	0.9	0.1	6.6 (1989)
Venezuela	0	0	0.1	0.1	23 (1998)	1.4	1.3	4.2	4.8	47 (1998)
Botswana	35.4	8	1.2	0.4	33.3 (1986)	60	27	13	9	61.4 (1986)
Burkina Faso	60.9	53.4	48.5	43.3	61.2 (1994)	79	76	74	71	85.8 (1994)
Central African Republi	29.8	35.6	43.2	53.7	66.6 (1993)	48	55	62	72	84 (1993)
Cote d'Ivoire	6.5	3	7	4.9	12.3 (1995)	27	21	32	29	49.4 (1995)
Ethiopia	60.5	56.5	62.9	61.1	31.3 (1995)	82	80	83	82	76.4 (1995)
Gabon	0.7	0.2	0.2	0.4	n/a	12	3	5	9	n/a
Gambia	25.1	17.5	29.9	35.3	59.3 (1998)	52	40	58	64	82.9 (1998)
Ghana	4.9	11	20.2	20.2	44.8 (1999)	33	43	53	50	78.5 (1999)
Guinea	2.7	2.2	2.7	1.6	n/a	21	20	21	18	n/a
Guinea-Bissau	50.6	62.6	54	61.1	n/a	72	79	74	78	n/a
Kenya	50	33.8	35.2	35	26.5 (1994)	74	62	63	63	62.3 (1994)
Lesotho	46.1	24	23.8	23.4	43.1 (1993)	68	44	44	43	65.7 (1993)
Madagascar	8.4	19	39.6	50.6	49.1 (1999)	37	52	70	75	83.3 (1999)
Mali	55.5	46.1	53	51.4	72.8 (1994)	76	71	75	74	90.6 (1994)
Mauritius	0.3	0.1	0.1	0.1	n/a	9	1	0	0	n/a
Mozambique	3	16	27.1	26.8	37.9 (1996)	22	46	60	60	78.4 (1996)
Niger	23.5	27.9	39.8	44.2	61.4 (1995)	50	55	68	71	85.3 (1993)
Nigeria	8.5	16.6	30.9	45.9	70.2 (1997)	45	53	63	70	90.8 (1997)
Rwanda	31.2	17.5	19.5	23.8	35.7(1985)	71	58	61	65	84.6 (1985)
Senegal	20.9	22.3	23	23.4	26.3 (1995)	48	50	51	51	67.8 (1995)
Sierra Leone	42.3	44.4	48.7	59.1	57 (1989)	57	60	63	72	74.5 (1989)
South Africa	5.9	3.2	3.8	4.3	11.5 (1993)	20	17	18	19	35.8 (1993)
Tanzania	57.1	52.8	63.9	70.2	19.9 (1993)	81	79	85	89	59.7 (1993)
Uganda	55.3	73.2	49.2	37.9	n/a	88	93	78	69	n/a
Zambia	19.2	30.5	40.4	51.6	63.7 (1998)	43	57	67	75	87.4 (1998)
Zimbabwe	17.5	14.9	11.3	10.5	36 (1991)	44	41	37	36	64.2 (1991)

Source: Poverty data: Xavier Sala-i-Martin. The World Distribution of Income (Estimated from Individual Country Distributions). National Bureau of Economic Research, Working Paper 8933, © 2002. World Bank. 2002 World Development Indicators. Washington D.C. 2002.

Note: Sala-i-Martin constructed income distribution density functions using PPP adjusted GDP and quintile income shares. He then derived the poverty rates by dividing the area under the density functions between 0 and the \$1 a day level (and \$2 a day) by the entire area under the density function.

Table 3: Real GDP per Worker and Real Compensation per Worker in Latin America, 1980-1998

		1980	1985	1990	1995	1998	Average annual growth rates		
							1980-1998	1985-1998	1980-1995
Brazil	Real GDP per Worker, in 1996 US dollars	17,477	16,808	16,984	18,479	18,191	0.22	0.61	0.37
	Real compensation per Worker, in Reals, 1998 prices	5.39	6.09	n/a	5.42	5.78	0.39	-0.39	0.04
Chile	Real GDP per Worker, in 1996 US dollars	15,988	14,049	16,799	21,990	25,079	2.53	4.56	2.15
	Real compensation per Worker, in thousands of Pesos, 1998 prices	n/a	1,225	1,490	2,000	2,285	n/a	4.92	n/a
Colombia	Real GDP per Worker, in 1996 US dollars	13,910	13,583	15,114	12,070	12,117	-0.76	-0.87	-0.94
	Real compensation per Worker, in thousands of Pesos, 1998 prices	3,181	3,108	3,384	2,869	2,794	-0.72	-0.82	-0.69
Costa Rica	Real GDP per Worker, in 1996 US dollars	15,889	13,340	14,150	13,783	13,870	-0.75	0.30	-0.94
	Real compensation per Worker, in thousands of Colons, 1998 prices	918	n/a	908	1,110	1,138	1.20	n/a	1.27
Ecuador	Real GDP per Worker, in 1996 US dollars	14,116	12,972	12,373	12,729	12,318	-0.75	-0.40	-0.69
	Real compensation per Worker, in thousands of Sucres, 1998 Prices	9,869	6,383	4,110	4,381	n/a	n/a	n/a	-5.27
Jamaica	Real GDP per Worker, in 1996 US dollars	7,925	7,031	8,291	7,696	7,531	-0.28	0.53	-0.20
	Real compensation per Worker, in thousands of Dollars, 1998 prices	n/a	75.2	86.2	91.9	94.1	n/a	1.74	n/a
Mexico	Real GDP per Worker, in 1996 US dollars	23,885	23,256	21,411	20,947	22,498	-0.33	-0.25	-0.87
	Real compensation per Worker, in millions of Pesos, 1998 prices	48.4	n/a	n/a	34.4	35.3	-1.74	n/a	-2.24
Panama	Real GDP per Worker, in 1996 US dollars	15,906	16,764	13,818	15,187	15,785	-0.04	-0.46	-0.31
	Real compensation per Worker, thousands of Balboas, 1998 prices	3.90	3.92	3.56	4.00	4.54	0.84	1.13	0.17
Peru	Real GDP per Worker, in 1996 US dollars	15,788	13,872	11,218	10,226	10,254	-2.37	-2.30	-2.85
	Real compensation per Worker, in Nuevos Soles, 1998 prices	15,903	12,578	6,170	3,765	3,798	-7.65	-8.80	-9.16
Trinidad & Tobago	Real GDP per Worker, in 1996 US dollars	26,466	26,139	22,444	23,553	23,187	-0.73	-0.92	-0.77
	Real compensation per Worker, in thousands of Dollars, 1998 prices	69.5	59.2	54.5	32.1	34.6	-3.80	-4.05	-5.01
Venezuela	Real GDP per Worker, in 1996 US dollars	24,179	20,074	20,007	20,415	19,357	-1.23	-0.28	-1.12
	Real compensation per Worker, in thousands of Bolivares, 1998 prices	n/a	3,446	2,632	2,311	2,076	n/a	-3.82	n/a

Sources: Compensation: Economic Commission for Latin America and the Caribbean. Statistical Yearbook for Latin America and the Caribbean 2001.

United Nations, 2002. Available at www.eclac.org. Inflation Rates used to deflate nominal compensation are from: International Monetary Fund.

World Economic Outlook Database September 2002. available at www.imf.org. Real GDP per Worker and Employment used to calculate real compensation per worker are from Alan Heston

Robert Summers and Bettina Aten. Penn World Table, Version 6.1. Center for International Comparisons at the University of Pennsylvania (CICUP), October 2002.

Available at <http://pwt.econ.upenn.edu/>

Table 4: Decomposition of Economic Growth into Productivity Growth and Growth in Labour Market Variables, in Developing Countries, Based on Penn world Table Estimates, 1970-1998

	Average annual growth rates				As a share of Economic Growth		
	Employment				Employment		
	Real GDP	Real GDP	Population	Total	Real GDP	Population	Total
	per Worker	Ratio	Population	per Worker	Ratio	Population	
Botswana	9.99	7.00	-0.44	3.25	70.0	-4.4	32.6
Central African Republic	-0.52	-2.26	-0.62	2.41	431.2	118.2	-459.9
Cote d'Ivoire	3.01	0.14	-0.79	3.68	4.6	-26.1	122.3
Gabon	3.85	0.81	-0.02	3.04	21.0	-0.6	79.0
Ghana	2.63	-0.81	0.69	2.76	-30.7	26.1	104.9
Gambia	3.29	0.14	-0.36	3.52	4.1	-10.9	107.0
Kenya	4.95	1.13	0.44	3.32	22.8	9.0	67.1
Madagascar	1.15	-1.10	-0.44	2.73	-96.2	-38.7	238.1
Mali	2.81	-0.81	1.23	2.39	-28.7	43.7	85.0
Mozambique	0.48	-0.99	-0.63	2.13	-209.2	-133.5	448.6
Mauritius	5.45	4.41	-0.23	1.22	81.0	-4.2	22.4
Niger	1.02	-1.53	-0.61	3.22	-150.8	-60.2	316.8
Nigeria	2.64	-0.85	0.53	2.97	-32.2	20.0	112.7
Rwanda	2.54	-0.04	-0.23	2.81	-1.5	-9.1	110.9
Senegal	2.57	-0.25	0.02	2.81	-9.7	0.6	109.4
Sierra Leone	n/a	n/a	n/a	2.16	n/a	n/a	n/a
Tanzania	2.37	-0.30	-0.41	3.09	-12.5	-17.2	130.6
Uganda	4.22	1.44	-0.02	2.76	34.1	-0.5	65.5
South Africa	2.56	0.54	-0.26	2.27	21.2	-10.2	88.8
Zambia	1.45	-1.42	-0.11	3.03	-97.7	-7.9	208.7
Zimbabwe	3.89	0.34	0.49	3.04	8.8	12.5	78.0
Burundi	0.93	-0.95	-0.35	2.25	-102.1	-38.0	242.8
Burkina Faso	3.59	1.84	-0.60	2.33	51.3	-16.6	64.9
Ethiopia	2.34	-0.05	-0.31	2.72	-2.3	-13.1	115.8
Guinea	2.93	1.48	-0.72	2.16	50.7	-24.6	73.7
Guinea-Bissau	5.26	2.81	-0.44	2.84	53.3	-8.3	53.9
Lesotho	4.21	2.23	-0.30	2.24	53.0	-7.1	53.2
Total less Sierra Leone	2.71	-0.08	0.00	2.80	-3.0	0.0	103.3
Bolivia	2.57	-0.42	0.70	2.29	-16.4	27.1	89.2
Brazil	4.26	1.81	0.42	1.98	42.5	9.9	46.4
Chile	4.23	1.77	0.80	1.60	41.8	19.0	37.9
Colombia	4.24	0.50	1.55	2.14	11.7	36.6	50.4
Costa Rica	3.66	0.06	0.88	2.69	1.6	24.1	73.6
Dominican Republic	5.30	2.42	0.61	2.19	45.6	11.6	41.2
Ecuador	4.48	1.84	0.02	2.58	41.1	0.4	57.5
Guatemala	3.50	1.01	-0.14	2.61	28.8	-4.0	74.6
Honduras	3.69	0.38	0.19	3.10	10.4	5.0	84.1
Jamaica	1.05	-1.07	0.98	1.15	-101.7	93.2	109.5
Mexico	3.75	0.51	0.76	2.45	13.6	20.2	65.3
Nicaragua	-0.07	-3.13	0.19	2.96	4588.8	-285.5	-4340.1
Panama	3.82	1.18	0.40	2.19	31.0	10.6	57.4
Peru	2.17	-1.58	1.49	2.28	-72.5	68.8	104.9
Paraguay	5.04	0.96	1.12	2.89	19.1	22.2	57.3
El Salvador	2.03	0.26	-0.10	1.86	13.0	-5.1	92.0
Trinidad & Tobago	2.27	0.56	0.68	1.01	24.8	30.1	44.4
Uruguay	2.39	1.34	0.47	0.57	56.0	19.6	23.7
Venezuela	1.24	-2.22	0.72	2.80	-178.6	57.9	225.4
Barbados	3.83	2.48	0.95	0.37	64.7	24.7	9.7
Guyana	1.44	0.20	1.03	0.21	13.7	71.2	14.7
Total	3.65	0.81	0.67	22.19	18.4	18.4	608.0
Bangladesh	3.65	2.10	-0.78	2.32	57.5	-21.3	63.4
China	6.66	4.49	0.58	1.49	67.4	8.7	22.4
Hong Kong	6.80	5.03	-0.20	1.88	74.0	-2.9	27.7
Indonesia	6.36	4.10	0.18	1.98	64.5	2.9	31.2
India	4.90	2.82	-0.08	2.10	57.7	-1.7	42.9
Korea	7.27	5.24	0.61	1.31	72.0	8.4	18.0
Sri Lanka	3.95	2.39	0.07	1.46	60.5	1.7	36.9
Malaysia	7.02	4.15	0.17	2.59	59.1	2.4	36.8
Nepal	4.33	2.13	-0.24	2.39	49.3	-5.5	55.3
Pakistan	5.48	2.76	-0.15	2.81	50.3	-2.7	51.2
Philippines	3.48	0.70	0.36	2.39	20.3	10.2	68.7
Singapore	n/a	n/a	n/a	2.30	n/a	n/a	n/a
Thailand	6.45	4.19	0.31	1.85	65.0	4.8	28.7
Taiwan	8.22	6.17	0.48	1.45	75.0	5.8	17.6
Total Less Singapore	5.97	3.81	0.23	1.84	63.8	3.9	30.8

Source: Alan Heston, Robert Summers and Bettina Aten. *Penn World Table, Version 6.1*.

Center for International Comparisons at the University of Pennsylvania (CICUP), October 2002.

Note: The countries included in this table are just a selection of the countries for which data is available in the World Penn Tables.

Table 5: Decomposition of GDP per Capita Growth into Labour Productivity Growth and Employment to Population Ratio Growth in Developing Countries, Based on KILM-GGDC Estimates, 1970-1998

	Average annual growth rates				As a Share of Real GDP per Capita Growth, %		
	Real GDP	Real GDP per Worker	Employment to Population Ratio	Total Population	Real GDP per Worker	Employment to Population Ratio	Total Population
Bangladesh	3.15	0.49	0.39	2.25	15.6	12.5	71.3
Burma	3.71	1.67	0.53	1.47	44.9	14.4	39.6
China	6.64	4.23	0.80	1.50	63.7	12.0	22.6
Hong Kong	6.58	3.69	0.81	1.96	56.1	12.4	29.7
India	4.65	2.08	0.40	2.11	44.7	8.6	45.4
Indonesia	5.64	2.85	0.45	2.26	50.6	7.9	40.0
Malaysia	7.09	3.54	1.06	2.35	49.9	14.9	33.2
Pakistan	5.20	2.53	-0.01	2.62	48.6	-0.2	50.3
Philippines	3.45	0.26	0.70	2.47	7.5	20.3	71.5
Singapore	7.94	4.02	1.49	2.25	50.6	18.7	28.4
Korea	8.11	5.25	1.38	1.32	64.8	17.0	16.3
Sri Lanka	4.65	3.20	-0.07	1.48	68.8	-1.5	31.7
Taiwan	7.56	4.87	1.09	1.45	64.4	14.5	19.2
Thailand	6.45	3.87	0.67	1.79	60.1	10.4	27.8
Asian Aggregate	5.94	3.42	0.58	1.85	57.5	9.7	31.1
Argentina	2.31	1.01	-0.24	1.53	43.8	-10.3	66.1
Brazil	4.11	1.29	0.68	2.09	31.3	16.5	51.0
Chili	4.08	1.48	0.90	1.64	36.3	22.1	40.3
Colombia	4.20	1.44	0.61	2.10	34.2	14.6	49.9
Mexico	3.85	0.78	0.82	2.21	20.3	21.3	57.3
Peru	2.23	-0.76	0.54	2.46	-34.2	24.2	110.5
Venezuela	2.03	-1.47	0.82	2.71	-72.1	40.2	133.4
Latin American Aggregate	3.49	0.76	0.59	2.10	21.7	17.0	60.3
Côte d'Ivoire	2.69	-0.76	-0.20	3.68	-28.3	-7.3	136.8
Egypt	5.54	3.00	-0.06	2.53	54.1	-1.0	45.6
Ethiopia	2.29	-0.15	-0.09	2.54	-6.6	-3.9	110.8
Ghana	2.21	-0.59	0.06	2.75	-26.6	2.6	124.7
Kenya	3.97	0.46	0.02	3.47	11.7	0.6	87.3
Morocco	4.07	1.26	0.59	2.18	30.9	14.5	53.4
Nigeria	2.92	0.17	-0.25	3.00	5.7	-8.5	102.9
South Africa	2.13	-0.33	0.28	2.19	-15.3	13.0	102.4
Tanzania	2.80	-0.14	-0.10	3.05	-5.1	-3.7	109.0
Zaire	-1.12	-3.70	-0.30	2.99	331.5	26.6	-267.8
African Aggregate	3.10	0.36	-0.04	2.77	11.6	-1.2	89.3
Israel	4.88	1.77	0.64	2.40	36.3	13.2	49.1
Iran	3.17	0.37	-0.12	2.90	11.8	-3.7	91.7
Iraq	-0.44	-3.33	0.01	2.98	759.5	-2.9	-679.2
Jordan	6.02	1.66	0.14	4.14	27.6	2.3	68.8
Saudi	4.73	-0.38	0.66	4.44	-8.1	14.0	93.9
Syria	6.05	2.42	0.25	3.29	40.0	4.1	54.3
United Arab	6.71	-2.99	1.62	8.25	-44.5	24.1	122.8
Yemen	5.55	2.33	0.11	3.03	42.1	2.0	54.5
Middle East Aggregate	3.98	0.62	0.13	3.20	15.6	3.3	80.4

Source: Groningen Growth & Development Centre: Total Economy Database. Available at www.eco.rug.nl/ggcd/dseries/totecon.shtml, March 7, 2003.

Table 6: Decomposition of GDP per Capita Growth into Productivity Growth and Growth in Labour Market Variables, in Developing Countries, Based on Penn World Table Estimates, 1970-1998

	Average annual growth rates			As a share of Real GDP per Capita Growth	
	Real GDP per Capita	Real GDP per Worker	Employment to	Real GDP per Worker	Employment to
			Population Ratio		Population Ratio
Botswana	6.53	7.00	-0.44	107.2	-6.7
Central African Republic	-2.87	-2.26	-0.62	78.9	21.6
Cote d'Ivoire	-0.65	0.14	-0.79	-21.5	121.4
Gabon	0.78	0.81	-0.02	102.9	-2.9
Ghana	-0.13	-0.81	0.69	640.4	-544.8
Gambia	-0.22	0.14	-0.36	-60.6	160.4
Kenya	1.58	1.13	0.44	71.5	28.2
Madagascar	-1.54	-1.10	-0.44	71.6	28.8
Mali	0.41	-0.81	1.23	-195.3	297.7
Mozambique	-1.62	-0.99	-0.63	61.3	39.1
Mauritius	4.18	4.41	-0.23	105.7	-5.4
Niger	-2.14	-1.53	-0.61	71.8	28.7
Nigeria	-0.33	-0.85	0.53	260.8	-162.2
Rwanda	-0.27	-0.04	-0.23	14.1	85.9
Senegal	-0.23	-0.25	0.02	106.5	-6.5
Sierra Leone	n/a	n/a	n/a	n/a	n/a
Tanzania	-0.70	-0.30	-0.41	42.2	57.9
Uganda	1.42	1.44	-0.02	101.6	-1.6
South Africa	0.28	0.54	-0.26	193.5	-93.0
Zambia	-1.53	-1.42	-0.11	92.6	7.5
Zimbabwe	0.83	0.34	0.49	41.1	58.7
Burundi	-1.29	-0.95	-0.35	73.1	27.2
Burkina Faso	1.23	1.84	-0.60	149.4	-48.5
Ethiopia	-0.36	-0.05	-0.31	14.9	85.2
Guinea	0.75	1.48	-0.72	197.1	-95.6
Guinea-Bissau	2.36	2.81	-0.44	119.0	-18.5
Lesotho	1.92	2.23	-0.30	115.8	-15.4
Total Less Sierra Leone	-0.08	-0.08	0.00	100.0	0.0
Bolivia	0.27	-0.42	0.70	-155.9	257.0
Brazil	2.24	1.81	0.42	80.8	18.8
Chile	2.59	1.77	0.80	68.4	31.0
Colombia	2.06	0.50	1.55	24.2	75.5
Costa Rica	0.94	0.06	0.88	6.4	93.6
Dominican Republic	3.05	2.42	0.61	79.3	20.2
Ecuador	1.86	1.84	0.02	99.1	0.8
Guatemala	0.87	1.01	-0.14	116.4	-16.2
Honduras	0.57	0.38	0.19	67.3	32.6
Jamaica	-0.10	-1.07	0.98	1080.3	-990.9
Mexico	1.27	0.51	0.76	40.2	59.5
Nicaragua	-2.95	-3.13	0.19	106.4	-6.6
Panama	1.59	1.18	0.40	74.4	25.3
Peru	-0.10	-1.58	1.49	1503.3	-1425.8
Paraguay	2.09	0.96	1.12	46.0	53.5
El Salvador	0.16	0.26	-0.10	164.9	-64.7
Trinidad & Tobago	1.25	0.56	0.68	45.0	54.7
Uruguay	1.82	1.34	0.47	73.8	25.9
Venezuela	-1.52	-2.22	0.72	146.4	-47.5
Barbados	3.45	2.48	0.95	71.9	27.4
Guyana	1.23	0.20	1.03	16.1	83.7
Total	1.44	0.81	0.67	56.3	46.5
Bangladesh	1.31	2.10	-0.78	160.7	-59.5
China	5.10	4.49	0.58	88.2	11.3
Hong Kong	4.83	5.03	-0.20	104.3	-4.1
Indonesia	4.29	4.10	0.18	95.6	4.3
India	2.74	2.82	-0.08	103.1	-3.0
Korea	5.88	5.24	0.61	89.1	10.4
Sri Lanka	2.46	2.39	0.07	97.2	2.7
Malaysia	4.32	4.15	0.17	96.0	3.9
Nepal	1.89	2.13	-0.24	112.8	-12.5
Pakistan	2.60	2.76	-0.15	105.9	-5.7
Philippines	1.06	0.70	0.36	66.3	33.4
Singapore	n/a	n/a	n/a	n/a	n/a
Thailand	4.51	4.19	0.31	92.9	6.8
Taiwan	6.68	6.17	0.48	92.4	7.2
Total Less Singapore	4.05	3.81	0.23	94.1	5.7

Source: Alan Heston, Robert Summers and Bettina Aten. *Penn World Table, Version 6.1*.

Center for International Comparisons at the University of Pennsylvania (CICUP), October 2002.

Note: The countries included in this table are just a selection of the countries for which data is available in the World Penn Tables.

Table 7: Decomposition of GDP per Capita Growth into Labour Productivity Growth and Employment Population Ratio Growth in Developing Countries, Based on KILM-GGDC Estimates, 1970-1998

	Average annual growth rates			As a Share of Real GDP per Capita Growth, %	
	Real GDP per	Real GDP per	Employment	Real GDP per	Employment
	Capita	Worker	to Population	Worker	to Population
	Ratio	Ratio	Ratio	Ratio	Ratio
Bangladesh	0.89	0.49	0.39	55.3	44.5
Burma	2.21	1.67	0.53	75.5	24.1
China	5.06	4.23	0.80	83.6	15.8
Hong Kong	4.54	3.69	0.81	81.4	17.9
India	2.49	2.08	0.40	83.5	16.1
Indonesia	3.31	2.85	0.45	86.2	13.5
Malaysia	4.63	3.54	1.06	76.3	22.8
Pakistan	2.52	2.53	-0.01	100.5	-0.5
Phillipines	0.96	0.26	0.70	26.8	73.0
Singapore	5.57	4.02	1.49	72.2	26.7
Korea	6.70	5.25	1.38	78.4	20.5
Sri Lanka	3.13	3.20	-0.07	102.4	-2.3
Taiwan	6.02	4.87	1.09	80.9	18.2
Thailand	4.57	3.87	0.67	84.7	14.7
Asian Aggregate	4.02	3.42	0.58	85.1	14.4
Argentina	0.77	1.01	-0.24	131.3	-31.0
Brazil	1.97	1.29	0.68	65.2	34.3
Chili	2.40	1.48	0.90	61.8	37.7
Colombia	2.06	1.44	0.61	69.8	29.8
Mexico	1.61	0.78	0.82	48.6	51.0
Peru	-0.23	-0.76	0.54	334.2	-236.0
Venezuela	-0.66	-1.47	0.82	221.8	-123.6
Latin American Aggregate	1.35	0.76	0.59	55.8	43.9
Côte d'Ivoire	-0.95	-0.76	-0.20	79.7	20.5
Egypt	2.94	3.00	-0.06	102.0	-2.0
Ethiopia	-0.24	-0.15	-0.09	63.2	36.9
Ghana	-0.53	-0.59	0.06	110.6	-10.7
Kenya	0.49	0.46	0.02	95.4	4.6
Morocco	1.86	1.26	0.59	67.8	31.8
Nigeria	-0.08	0.17	-0.25	-201.1	300.6
South Africa	-0.05	-0.33	0.28	640.2	-542.0
Tanzania	-0.24	-0.14	-0.10	58.0	42.1
Zaire	-3.99	-3.70	-0.30	92.8	7.5
African Aggregate	0.32	0.36	-0.04	111.3	-11.3
Israel	2.43	1.77	0.64	73.0	26.5
Iran	0.25	0.37	-0.12	146.4	-46.2
Iraq	-3.32	-3.33	0.01	100.4	-0.4
Jordan	1.80	1.66	0.14	92.1	7.8
Saudi	0.28	-0.38	0.66	-137.7	238.6
Syria	2.68	2.42	0.25	90.4	9.4
United Arab	-1.42	-2.99	1.62	211.1	-114.5
Yemen	2.45	2.33	0.11	95.3	4.6
Middle East Aggregate	0.75	0.62	0.13	82.4	17.5

Table 8: Multiple Regression Results on the Relationship Between Poverty Incidence, Labour Productivity and Income Inequality, Using Penn World Table Estimates, 1970-1998

Regression Between Levels of Poverty, Productivity and Income Inequality

Dependent Variable: \$1 a day poverty rate, earliest date

Variable	Coefficient	Std. Error	t-Statistic	Prob.
Constant	24.85723	11.71702	2.121464	0.0444
Labour productivity earliest date	-0.001514	0.000433	-3.496027	0.0019
GINI coefficient earliest date	0.067624	0.318154	0.212551	0.8335
R-squared	0.414063	Mean dependent var		13.28519
Adjusted R-squared	0.365235	S.D. dependent var		16.23109
S.E. of regression	12.93166	Akaike info criterion		8.061674
Sum squared resid	4013.468	Schwarz criterion		8.205655
Log likelihood	-105.8326	F-statistic		8.480004
Durbin-Watson stat	1.314639	Prob(F-statistic)		0.001638

Dependent Variable: \$1 a day poverty rate, latest date

Variable	Coefficient	Std. Error	t-Statistic	Prob.
Constant	-5.507332	14.65729	-0.37574	0.7104
Labour productivity latest date	-0.000598	0.000263	-2.270446	0.0324
GINI coefficient latest date	0.456592	0.321729	1.419181	0.1687
R-squared	0.213048	Mean dependent var		5.907407
Adjusted R-squared	0.147469	S.D. dependent var		16.64946
S.E. of regression	15.37288	Akaike info criterion		8.407526
Sum squared resid	5671.812	Schwarz criterion		8.551508
Log likelihood	-110.5016	F-statistic		3.24871
Durbin-Watson stat	0.589813	Prob(F-statistic)		0.056413

Dependent Variable: \$2 a day poverty rate, earliest date

Variable	Coefficient	Std. Error	t-Statistic	Prob.
Constant	58.38878	13.83617	4.22001	0.0003
Labour productivity earliest date	-0.002556	0.000511	-4.997945	0
GINI coefficient earliest date	-0.062262	0.375695	-0.165725	0.8698
R-squared	0.616318	Mean dependent var		31.48148
Adjusted R-squared	0.584345	S.D. dependent var		23.68572
S.E. of regression	15.27049	Akaike info criterion		8.394161
Sum squared resid	5596.51	Schwarz criterion		8.538143
Log likelihood	-110.3212	F-statistic		19.27594
Durbin-Watson stat	1.747141	Prob(F-statistic)		0.00001

Table 8 cont'd: Multiple Regression Results on the Relationship Between Poverty Incidence, Labour Productivity and Income Inequality, 1970-1998

Dependent Variable: \$2 a day poverty rate, latest date

Variable	Coefficient	Std. Error	t-Statistic	Prob.
Constant	11.80985	16.70487	0.706971	0.4864
Labour productivity latest date	-0.001126	0.0003	-3.753322	0.001
GINI coefficient latest date	0.495604	0.366674	1.351621	0.1891
R-squared	0.383393	Mean dependent var		17.12593
Adjusted R-squared	0.332009	S.D. dependent var		21.43677
S.E. of regression	17.52043	Akaike info criterion		8.669051
Sum squared resid	7367.17	Schwarz criterion		8.813033
Log likelihood	-114.0322	F-statistic		7.461333
Durbin-Watson stat	0.91903	Prob(F-statistic)		0.003021

Regression Between Changes in Poverty , Productivity and Income Inequality

Dependent Variable: \$1 a day poverty rate percentage point change between earliest and latest date

Variable	Coefficient	Std. Error	t-Statistic	Prob.
Constant	-4.910328	2.283966	-2.149913	0.0419
Average annual growth rate in Labour productivity	-1.754283	0.685705	-2.558362	0.0172
Average annual growth rate in GINI coefficient	3.298945	2.16556	1.523368	0.1407
R-squared	0.25658	Mean dependent var		-7.377778
Adjusted R-squared	0.194629	S.D. dependent var		9.812917
S.E. of regression	8.806355	Akaike info criterion		7.293263
Sum squared resid	1861.245	Schwarz criterion		7.437245
Log likelihood	-95.45906	F-statistic		4.141624
Durbin-Watson stat	2.49997	Prob(F-statistic)		0.028498

Dependent Variable: \$2 a day poverty rate percentage point change between earliest and latest date

Variable	Coefficient	Std. Error	t-Statistic	Prob.
Constant	-8.191396	3.473906	-2.357978	0.0269
Average annual growth rate in Labour productivity	-3.471274	1.042956	-3.328304	0.0028
Average annual growth rate in GINI coefficient	2.763644	3.29381	0.839042	0.4097
R-squared	0.322048	Mean dependent var		-14.35556
Adjusted R-squared	0.265552	S.D. dependent var		15.62947
S.E. of regression	13.39444	Akaike info criterion		8.131996
Sum squared resid	4305.865	Schwarz criterion		8.275978
Log likelihood	-106.7819	F-statistic		5.700379
Durbin-Watson stat	2.572424	Prob(F-statistic)		0.009427

Table 8a: Multiple Regression Results on the Relationship Between Poverty Incidence, Labour Productivity and Income Inequality, Using KILM-GGDC Estimates, 1970-1998

Regression Between Levels of Poverty, Productivity and Income Inequality

Dependent Variable: \$1 a day poverty rate, earliest date

Variable	Coefficient	Std. Error	t-Statistic	Prob.
Constant	30.39066	13.08223	2.323049	0.0321
Labour productivity earliest date	-0.001202	0.000417	-2.880493	0.01
GINI coefficient earliest date	-0.094246	0.338689	-0.278266	0.784
R-squared	0.386565	Mean dependent var		15.50476
Adjusted R-squared	0.318406	S.D. dependent var		17.72632
S.E. of regression	14.63463	Akaike info criterion		8.336221
Sum squared resid	3855.101	Schwarz criterion		8.485439
Log likelihood	-84.53032	F-statistic		5.671482
Durbin-Watson stat	1.409913	Prob(F-statistic)		0.0123

Dependent Variable: \$2 a day poverty rate, earliest date

Variable	Coefficient	Std. Error	t-Statistic	Prob.
Constant	67.38314	15.73736	4.281732	0.0004
Labour productivity earliest date	-0.002064	0.000502	-4.112019	0.0007
GINI coefficient earliest date	-0.340873	0.407428	-0.836647	0.4138
R-squared	0.589063	Mean dependent var		34.4619
Adjusted R-squared	0.543403	S.D. dependent var		26.05345
S.E. of regression	17.60483	Akaike info criterion		8.705787
Sum squared resid	5578.738	Schwarz criterion		8.855004
Log likelihood	-88.41076	F-statistic		12.90116
Durbin-Watson stat	1.949035	Prob(F-statistic)		0.000334

Dependent Variable: \$1 a day poverty rate, latest date

Variable	Coefficient	Std. Error	t-Statistic	Prob.
Constant	-8.751424	16.93176	-0.516864	0.6115
Labour productivity latest date	-0.000741	0.000313	-2.36733	0.0293
GINI coefficient latest date	0.622407	0.382699	1.626365	0.1213
R-squared	0.289039	Mean dependent var		7.090476
Adjusted R-squared	0.210044	S.D. dependent var		18.78811
S.E. of regression	16.69877	Akaike info criterion		8.600111
Sum squared resid	5019.281	Schwarz criterion		8.749328
Log likelihood	-87.30116	F-statistic		3.65893
Durbin-Watson stat	0.786661	Prob(F-statistic)		0.04641

Table 8a cont'd: Multiple Regression Results on the Relationship Between Poverty Incidence, Labour Productivity and Income Inequality, Using KILM-GGDC Estimates, 1970-1998

Dependent Variable: \$2 a day poverty rate, latest date

Variable	Coefficient	Std. Error	t-Statistic	Prob.
Constant	12.15572	18.74937	0.648327	0.525
Labour productivity latest date	-0.001362	0.000347	-3.926169	0.001
GINI coefficient latest date	0.603386	0.423781	1.423816	0.1716
R-squared	0.473654	Mean dependent var		17.94286
Adjusted R-squared	0.415171	S.D. dependent var		24.1799
S.E. of regression	18.49137	Akaike info criterion		8.804049
Sum squared resid	6154.754	Schwarz criterion		8.953266
Log likelihood	-89.44251	F-statistic		8.099004
Durbin-Watson stat	1.077187	Prob(F-statistic)		0.003101

Regression Between Changes in Poverty , Productivity and Income Inequality

Dependent Variable: \$1 a day poverty rate percentage point change between earliest and latest date

Variable	Coefficient	Std. Error	t-Statistic	Prob.
Constant	-6.16401	3.432119	-1.795978	0.0893
Average annual growth rate in Labour productivity	-1.397753	1.078944	-1.295482	0.2115
Average annual growth rate in GINI coefficient	2.907242	2.729248	1.065217	0.3009
R-squared	0.135394	Mean dependent var		-8.414286
Adjusted R-squared	0.039326	S.D. dependent var		10.67929
S.E. of regression	10.4672	Akaike info criterion		7.665933
Sum squared resid	1972.12	Schwarz criterion		7.815151
Log likelihood	-77.4923	F-statistic		1.409361
Durbin-Watson stat	2.260439	Prob(F-statistic)		0.270001

Dependent Variable: \$2 a day poverty rate percentage point change between earliest and latest date

Variable	Coefficient	Std. Error	t-Statistic	Prob.
Constant	-8.820718	5.045475	-1.748243	0.0975
Average annual growth rate in Labour productivity	-3.638273	1.58613	-2.293805	0.0341
Average annual growth rate in GINI coefficient	1.527895	4.012202	0.380812	0.7078
R-squared	0.231105	Mean dependent var		-16.51905
Adjusted R-squared	0.145672	S.D. dependent var		16.64784
S.E. of regression	15.38757	Akaike info criterion		8.436561
Sum squared resid	4261.994	Schwarz criterion		8.585779
Log likelihood	-85.58389	F-statistic		2.70511
Durbin-Watson stat	2.5514	Prob(F-statistic)		0.09393

Table 9: Real GDP per Worker levels, KILM-GGDC and Penn World Table Estimates, 1998

	GDP per worker, 1998 level	
	Penn World Table	KILM-GGDC
	1996 US dollars	1990 Geary-Khamis US dollars
Hong Kong	48,034	42,684
Taiwan	38,941	36,023
Korea, Rep.	31,701	27,964
Malaysia	26,478	17,960
Thailand	11,718	11,247
Indonesia	8,827	7,353
Philippines	7,971	6,236
Sri Lanka	7,258	10,524
Pakistan	6,866	7,014
Bangladesh	6,433	2,478
India	5,800	4,684
China	5,416	5,987
Nepal	3,295	n/a
Barbados	31,616	n/a
Chile	25,079	27,428
Trinidad & Tobago	23,187	n/a
Uruguay	22,508	n/a
Mexico	22,498	20,855
Venezuela	19,357	26,153
Brazil	18,191	14,108
Panama	15,785	n/a
Dominican Republic	14,618	n/a
Costa Rica	13,870	n/a
El Salvador	13,512	n/a
Guatemala	13,098	n/a
Ecuador	12,318	n/a
Colombia	12,117	16,573
Paraguay	11,595	n/a
Peru	10,254	9,851
Guyana	9,119	n/a
Jamaica	7,531	n/a
Honduras	6,922	n/a
Bolivia	6,788	n/a
Nicaragua	5,413	n/a

Sources: Tables 21, 22, 23 in the KILM-GGDC Appendix data set, and Tables 13, 14, 15 in the Penn World Table Appendix data set.

Table 9 cont'd: Real GDP per Worker levels, KILM-GGDC and Penn World Table Estimates, 1998

	GDP per worker, 1998 level	
	Penn World Table	KILM-GGDC
	1996 US dollars	1990 Geary-Khamis US dollars
Mauritius	27,579	n/a
South Africa	21,860	10,173
Botswana	20,767	n/a
Gabon	17,653	n/a
Guinea	5,876	n/a
Zimbabwe	5,599	n/a
Cote d'Ivoire	5,014	3,516
Lesotho	3,206	n/a
Senegal	3,184	n/a
Kenya	2,567	2,094
Zambia	2,561	n/a
Ghana	2,559	2,646
Sierra Leone	2,543	n/a
Gambia	2,278	n/a
Nigeria	2,126	2,844
Central African Republic	2,090	n/a
Mozambique	2,040	n/a
Burkina Faso	1,968	n/a
Madagascar	1,898	n/a
Uganda	1,872	n/a
Mali	1,842	n/a
Niger	1,721	n/a
Rwanda	1,658	n/a
Guinea-Bissau	1,375	n/a
Ethiopia	1,274	859
Tanzania	976	1,030

Sources: Tables 21, 22, 23 in the KILM-GGDC Appendix data set, and Tables 13, 14, 15 in the Penn World Table Appendix data set.

Table 10: Trends in the Index of Human Development, 1975-2000

	Human Development Index Scores			Human Poverty Index (HPI-1)
	1975	2000	Change	2000
Hong Kong	0.756	0.888	0.132	na
Singapore	0.722	0.885	0.163	6.5
Korea	0.691	0.882	0.191	na
Kuwait	0.753	0.813	0.060	na
Malaysia	0.616	0.782	0.166	na
Thailand	0.604	0.762	0.158	14
Saudi Arabia	0.587	0.759	0.172	16.9
Fiji	0.660	0.758	0.098	21.3
Philippines	0.652	0.754	0.102	14.6
Turkey	0.593	0.742	0.149	12.7
Sri Lanka	0.616	0.741	0.125	17.6
China	0.523	0.726	0.203	14.9
Iran	0.556	0.721	0.165	17
Syria	0.538	0.691	0.153	19.3
Indonesia	0.469	0.684	0.215	18.8
India	0.407	0.577	0.170	33.1
Papua New Guinea	0.420	0.535	0.115	37.5
Pakistan	0.345	0.499	0.154	41
Nepal	0.289	0.490	0.201	43.4
Bangladesh	0.335	0.478	0.143	42.4
Argentina	0.785	0.844	0.059	na
Chile	0.702	0.831	0.129	4.1
Uruguay	0.757	0.831	0.074	3.9
Costa Rica	0.745	0.820	0.075	4
Trinidad & Tobago	0.722	0.805	0.083	7.9
Mexico	0.689	0.796	0.107	9.4
Panama	0.712	0.787	0.075	8.4
Colombia	0.660	0.772	0.112	8.9
Venezuela	0.716	0.770	0.054	8.5
Brazil	0.644	0.757	0.113	12.2
Peru	0.641	0.747	0.106	12.8
Jamaica	0.687	0.742	0.055	13.2
Paraguay	0.665	0.740	0.075	10.2
Ecuador	0.627	0.732	0.105	16.1
Dominican Republic	0.617	0.727	0.110	14
Guyana	0.676	0.708	0.032	11.4
El Salvador	0.586	0.706	0.120	18.1
Bolivia	0.514	0.653	0.139	16.3
Honduras	0.518	0.638	0.120	20.5
Nicaragua	0.565	0.635	0.070	24.4
Guatemala	0.506	0.631	0.125	23.5

Source: United Nations Development Programme. *Human Development Report 2002*. New York, Oxford University Press, 2002.

Table 10 cont'd: Trends in the Index of Human Development, 1975-2000

	Human Development Index Scores			Human Poverty Index (HPI-1)
	1975	2000	Change	2000
Mauritius	0.630	0.772	0.142	11.3
Tunisia	0.514	0.722	0.208	na
Algeria	0.501	0.697	0.196	23.4
South Africa	0.649	0.695	0.046	na
Egypt	0.435	0.642	0.207	31.2
Morocco	0.429	0.602	0.173	35.8
Swaziland	0.512	0.577	0.065	na
Botswana	0.494	0.572	0.078	na
Zimbabwe	0.547	0.551	0.004	36.1
Ghana	0.438	0.548	0.110	28.7
Lesotho	0.478	0.535	0.057	25.7
Kenya	0.443	0.513	0.070	31.9
Cameroon	0.410	0.512	0.102	30.7
Congo	0.417	0.512	0.095	30
Sudan	0.346	0.499	0.153	32.7
Togo	0.394	0.493	0.099	37.9
Madagascar	0.399	0.469	0.070	36.7
Nigeria	0.328	0.462	0.134	34.9
Mauritania	0.337	0.438	0.101	47.9
Zambia	0.449	0.433	-0.016	40
Senegal	0.313	0.431	0.118	45.2
Cote d'Ivoire	0.369	0.428	0.059	42.3
Benin	0.288	0.420	0.132	46.8
Gambia	0.272	0.405	0.133	48.5
Rwanda	0.336	0.403	0.067	44.3
Malawi	0.316	0.400	0.084	42.5
Mali	0.252	0.386	0.134	47.3
C.A.R	0.333	0.375	0.042	45.2
Chad	0.256	0.365	0.109	50.5
Guinea-Bissau	0.248	0.349	0.101	49.3
Burkina Faso	0.232	0.325	0.093	na
Burundi	0.280	0.313	0.033	na
Niger	0.234	0.277	0.043	62.5

Source: United Nations Development Programme. *Human Development Report 2002*. New York, Oxford University Press, 2002.

Table 11: Regression Results on the Relationship Between Real Wage Growth and Labour Productivity Growth

Dependent Variable: Average annual real labour compensation per worker growth rate

Variable	Coefficient	Std. Error	t-Statistic	Prob.
Intercept constant	-1.166415	0.711998	-1.638229	0.1358
Average annual real GDP per worker growth rat	1.666213	0.437956	3.804518	0.0042
R-squared	0.616603	Mean dependent var	-1.264351	
Adjusted R-squared	0.574003	S.D. dependent var	3.615661	
S.E. of regression	2.359885	Akaike info criterion	4.718068	
Sum squared resid	50.12151	Schwarz criterion	4.790413	
Log likelihood	-23.94938	F-statistic	14.47436	
Durbin-Watson stat	2.417492	Prob(F-statistic)	0.004188	

Table 12: Comparison of Labour Productivity Growth Rates, Based on Hours and Employment in Selected Developing Countries, 1960-2000

	Hong Kong		Singapore		Korea		Taiwan	
	Real GDP	Real GDP	Real GDP	Real GDP	Real GDP	Real GDP	Real GDP	Real GDP
	per Worker	per Hour	per Worker	per Hour	per Worker	per Hour	per Worker	per Hour
1960	15,872	6.07	7,653	3.10	4,032	na	4,976	1.80
1973	17,973	7.49	16,393	6.80	8,846	3.64	11,924	4.37
1979	23,216	9.82	19,522	8.21	11,849	4.64	15,821	5.95
1980	23,740	10.07	20,302	8.56	11,462	4.51	16,000	6.20
1981	24,194	10.29	20,763	8.78	11,879	4.70	16,970	6.82
1982	24,756	10.55	20,967	8.88	12,464	4.73	17,512	7.00
1983	25,949	11.09	22,138	9.40	13,776	5.27	18,715	7.52
1984	27,625	11.84	23,627	10.05	15,051	5.80	20,341	8.17
1985	27,417	11.78	23,847	10.17	15,457	5.96	21,117	8.63
1986	29,436	12.68	24,671	10.55	16,648	6.56	22,982	9.33
1987	32,500	14.03	25,901	11.10	17,601	6.75	23,746	9.64
1988	34,463	14.92	27,375	11.76	18,988	7.24	23,711	9.76
1989	35,470	15.39	28,592	12.31	19,405	7.55	23,651	9.88
1990	36,815	16.02	29,159	12.58	20,633	8.17	24,203	10.24
1991	38,115	16.62	30,450	13.17	21,823	8.69	25,550	10.82
1992	40,650	17.77	31,372	13.60	22,579	9.07	26,847	11.39
1993	42,218	18.46	34,999	15.17	23,455	9.44	28,362	12.05
1994	43,413	18.98	37,649	16.32	24,654	9.93	29,718	12.60
1995	44,484	19.45	39,399	17.08	26,161	10.48	31,256	13.40
1996	43,772	19.14	41,297	17.90	27,410	11.05	33,080	14.25
1997	44,508	19.46	42,817	18.56	28,390	11.59	34,873	14.97
1998	42,684	18.66	41,863	18.15	27,964	11.64	36,023	15.77
1999	44,247	19.35	44,385	19.24	30,571	12.18	37,589	16.45
2000	47,659	20.84	44,055	19.10	32,033	12.88	39,347	17.24
Average annual growth rate								
1960-2000	2.79	3.13	4.47	4.65	5.32	na	5.31	5.82
1973-2000	3.68	3.86	3.73	3.90	4.88	4.79	4.52	5.21
1980-2000	3.55	3.70	3.95	4.09	5.27	5.39	4.60	5.25
1990-2000	2.62	2.67	4.21	4.26	4.50	4.66	4.98	5.35
1960-1973	0.96	1.62	6.03	6.24	6.23	na	6.95	7.09
1973-1980	4.06	4.32	3.10	3.34	3.77	3.10	4.29	5.11

Source: Groningen Growth & Development Centre: Total Economy Database.

Available at www.eco.rug.nl/ggcd/dseries/totecon.shtml, May 27, 2003.

Table 12 cont'd: Comparison of Labour Productivity Growth Rates, Based on Hours and Employment in Selected Developing Countries, 1960-2000

	Argentina		Brazil		Chili		Colombia		Mexico		Venezuela	
	Real GDP		Real GDP		Real GDP		Real GDP		Real GDP		Real GDP	
	per Worker	Real GDP per Hour	per Worker	Real GDP per Hour	per Worker	Real GDP per Hour	per Worker	Real GDP per Hour	per Worker	Real GDP per Hour	per Worker	Real GDP per Hour
1960	14,602	7.04	7,235	3.39	13,919	6.85	8,820	3.98	11,483	5.34	35,283	17.43
1973	21,349	10.70	12,111	5.78	17,416	8.91	12,202	5.70	18,399	8.93	37,856	19.27
1979	23,030	11.65	14,149	7.07	18,150	9.35	13,397	6.43	21,083	10.27	35,503	17.82
1980	23,131	11.72	14,831	7.47	19,184	9.90	13,476	6.50	22,015	10.73	32,370	16.21
1981	21,434	10.93	13,810	7.00	19,673	10.13	13,430	6.51	23,387	11.40	31,512	15.87
1982	20,408	10.47	13,528	6.89	16,394	8.42	13,236	6.45	22,675	11.05	30,136	15.26
1983	20,772	10.73	12,726	6.52	15,820	8.11	13,122	6.43	21,189	10.32	28,328	14.42
1984	20,837	10.83	13,060	6.73	16,345	8.36	13,260	6.53	21,435	10.43	28,059	14.37
1985	19,130	10.01	13,730	7.11	16,268	8.30	13,364	6.61	21,510	10.46	27,823	14.32
1986	20,183	10.63	14,445	7.52	16,700	8.50	13,838	6.88	20,215	9.83	28,561	14.78
1987	20,355	10.79	14,540	7.61	17,155	8.71	14,229	7.12	20,105	9.77	28,894	15.04
1988	19,634	10.48	14,128	7.44	17,896	9.06	14,452	7.26	19,876	9.66	29,862	15.63
1989	18,104	9.72	14,211	7.52	19,119	9.66	14,560	7.36	20,222	9.82	26,665	14.03
1990	17,811	9.63	13,256	7.05	18,976	9.56	14,798	7.52	20,747	10.07	27,421	14.52
1991	19,474	10.49	13,072	6.97	19,922	10.02	14,787	7.50	20,995	10.23	29,070	15.35
1992	21,105	11.33	12,759	6.83	21,750	10.91	15,071	7.64	21,126	10.33	29,789	15.68
1993	22,062	11.81	13,069	7.01	22,627	11.33	15,529	7.87	20,913	10.26	28,860	15.15
1994	23,087	12.31	13,619	7.32	23,258	11.62	16,128	8.17	21,203	10.43	27,228	14.26
1995	22,179	11.78	13,964	7.53	25,019	12.54	16,621	8.44	19,318	9.51	27,346	14.28
1996	23,142	12.25	14,102	7.62	26,120	13.14	16,617	8.45	19,724	9.61	26,368	13.73
1997	24,738	13.05	14,327	7.76	27,288	13.78	16,837	8.59	20,449	9.83	27,099	14.07
1998	25,402	13.35	14,108	7.66	27,428	13.89	16,573	8.47	20,855	10.29	26,153	13.54
1999	24,260	12.75	13,997	7.60	27,765	14.07	15,886	8.12	21,099	10.18	24,110	12.49
2000	23,581	12.39	14,349	7.79	28,579	14.48	15,886	8.12	22,447	11.02	24,365	12.62
Average annual growth rate												
1960-2000	1.21	1.42	1.73	2.10	1.81	1.89	1.48	1.80	1.69	1.83	-0.92	-0.80
1973-2000	0.37	0.55	0.63	1.11	1.85	1.81	0.98	1.32	0.74	0.78	-1.62	-1.56
1980-2000	0.10	0.28	-0.17	0.21	2.01	1.92	0.83	1.12	0.10	0.13	-1.41	-1.24
1990-2000	2.85	2.56	0.80	1.00	4.18	4.23	0.71	0.78	0.79	0.90	-1.17	-1.39
1960-1973	2.96	3.27	4.04	4.19	1.74	2.04	2.53	2.81	3.69	4.03	0.54	0.77
1973-1980	1.15	1.31	2.94	3.74	1.39	1.52	1.43	1.89	2.60	2.67	-2.21	-2.44

Source: Groningen Growth & Development Centre: Total Economy Database.

Available at www.eco.rug.nl/ggcd/dseries/totecon.shtml, May 27, 2003.

Table 13: GDP Shares by Continent in 1998

Latin America		Africa		Asia and the Pacific	
	1998		1998		1998
ANTIGUA AND BARBUD ^a	0.02	ALGERIA	9.15	BAHRAIN	0.10
ARGENTINA	11.49	ANGOLA	1.36	BANGLADESH	1.32
BAHAMAS, THE	0.10	BENIN	0.51	BHUTAN	0.01
BARBADOS	0.10	BOTSWANA	0.83	CAMBODIA	0.14
BELIZE	0.03	BURKINA FASO	0.75	CHINA,P.R.: MAINLAND	40.20
BOLIVIA	0.72	BURUNDI	0.28	FIJI	0.03
BRAZIL	31.93	CAMEROON	1.86	CHINA,P.R.:HONG KONG	1.46
CHILE	5.80	CAPE VERDE	0.09	INDIA	16.43
COLOMBIA	8.32	CENTRAL AFRICAN REP.	0.32	INDONESIA	5.90
COSTA RICA	0.77	CHAD	0.49	IRAN, I.R. OF	3.58
DOMINICA	0.01	COMOROS	0.06	JORDAN	0.16
DOMINICAN REPUBLIC	1.27	CONGO, DEM. REP. OF	2.67	KIRIBATI	0.00
ECUADOR	1.79	CONGO, REPUBLIC OF	0.32	KOREA	5.65
EL SALVADOR	0.54	COTE D IVOIRE	1.82	KUWAIT	0.30
GRENADA	0.02	DJIBOUTI	0.10	LAO PEOPLE'S DEM.REP	0.06
GUATEMALA	1.36	EGYPT	12.96	LEBANON	0.25
GUYANA	0.08	EQUATORIAL GUINEA	0.10	MALAYSIA	1.58
HAITI	0.30	ETHIOPIA	1.97	MALDIVES	0.01
HONDURAS	0.41	GABON	0.61	MONGOLIA	0.03
JAMAICA	0.27	GAMBIA, THE	0.12	MYANMAR	0.51
MEXICO	22.31	GHANA	2.06	NEPAL	0.25
NETHERLANDS ANTILLE	0.09	GUINEA	0.91	OMAN	0.24
NICARAGUA	0.29	GUINEA-BISSAU	0.06	PAKISTAN	2.05
PANAMA	0.61	KENYA	2.30	PAPUA NEW GUINEA	0.10
PARAGUAY	0.56	LESOTHO	0.22	PHILIPPINES	2.50
PERU	3.42	LIBYA	4.74	QATAR	0.15
ST. KITTS AND NEVIS	0.01	MADAGASCAR	0.91	SAMOA	0.01
ST. LUCIA	0.03	MALAWI	0.50	SAUDI ARABIA	2.04
ST. VINCENT & GREN.S.	0.02	MALI	0.54	SINGAPORE	0.86
SURINAME	0.06	MAURITANIA	0.29	SOLOMON ISLANDS	0.01
TRINIDAD AND TOBAGO	0.28	MAURITIUS	0.76	SRI LANKA	0.47
URUGUAY	0.95	MOROCCO	6.50	SYRIAN ARAB REPUBLIC	0.49
VENEZUELA	6.05	MOZAMBIQUE	0.92	TAIWAN PROV.OF CHINA	3.76
Total	100.00	NAMIBIA	0.57	THAILAND	3.50
		NIGER	0.61	TONGA	0.00
		NIGERIA	7.24	TURKEY	3.91
		RWANDA	0.39	UNITED ARAB EMIRATES	0.51
		SAO TOME & PRINCIPE	0.01	VANUATU	0.01
		SENEGAL	1.07	VIETNAM	1.28
		SEYCHELLES	0.06	YEMEN, REPUBLIC OF	0.14
		SIERRA LEONE	0.13	Total	100.00
		SOUTH AFRICA	20.43		
		SUDAN	3.23		
		SWAZILAND	0.22		
		TANZANIA	1.20		
		TOGO	0.42		
		TUNISIA	3.27		
		UGANDA	1.64		
		ZAMBIA	0.60		
		ZIMBABWE	1.84		
		Total	100.00		

Source: International Monetary Fund. *World Economic Outlook, April 2003*. available at www.imf.org/external/pubs/ft/weo/2003/01/data/

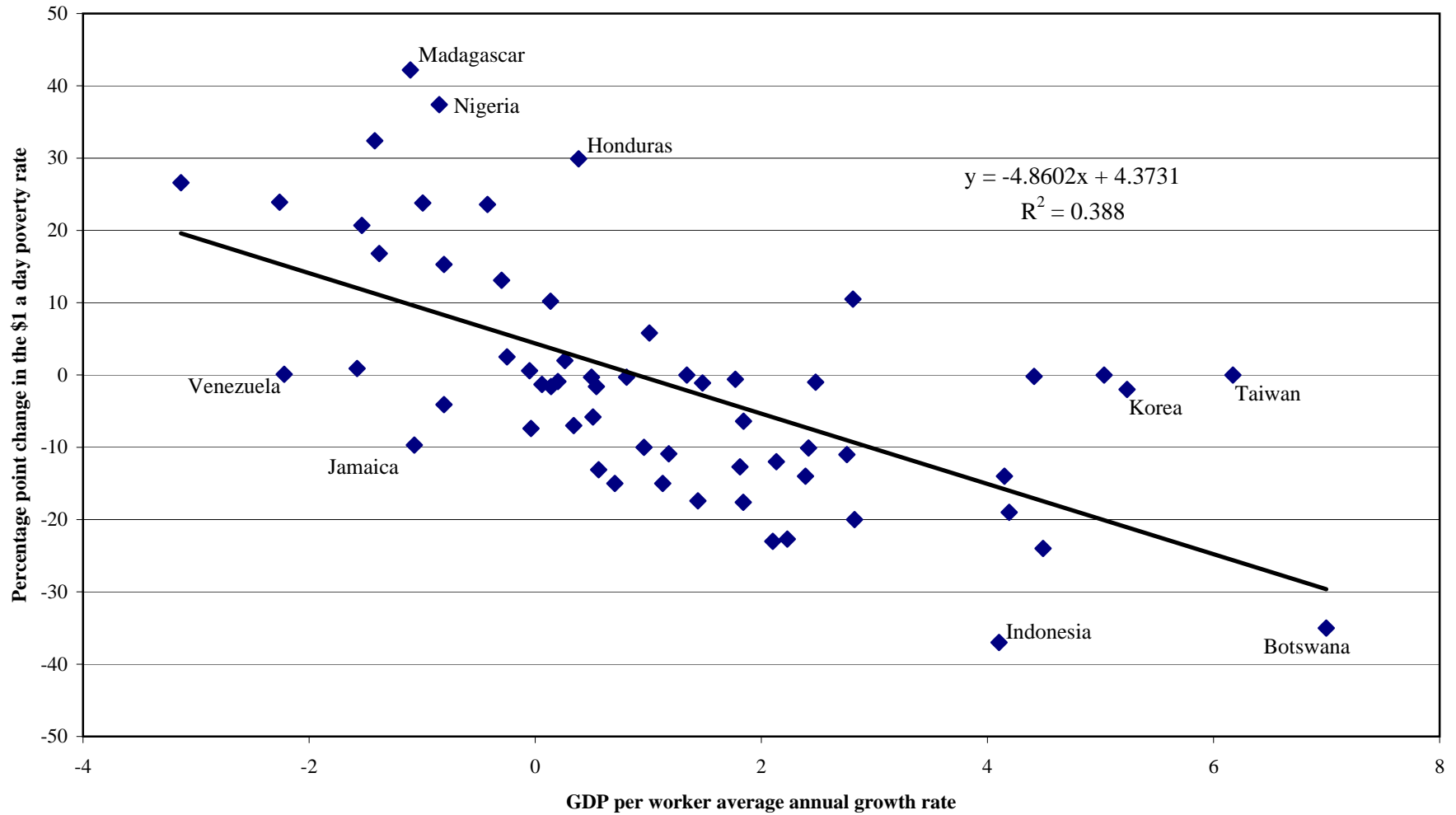
Table 14: Estimation of Poverty Incidence to Labour Productivity Elasticities

		Coefficient	t-statistic	Prob.	R-Squared	Durbin- Watson
Using \$1 a day poverty measure						
Using GDP per capita						
	Constant	8.15	8.270	0.000	0.25	0.88
All	GDP per capita	-0.70	-5.611	0.000		
Low	Constant	9.68	6.735	0.000	0.34	1.94
inequality	GDP per capita	-0.88	-4.610	0.000		
High	Constant	5.48	3.370	0.002	0.09	1.41
inequality	GDP per capita	-0.41	-2.038	0.048		
Using GDP per worker						
	Constant	9.19	9.467	0.000	0.33	0.85
All	GDP per worker	-0.74	-6.771	0.000		
Low	Constant	11.72	9.414	0.000	0.54	1.91
inequality	GDP per worker	-1.02	-6.965	0.000		
High	Constant	6.25	3.883	0.000	0.13	1.42
inequality	GDP per worker	-0.45	-2.539	0.015		
Using \$2 a day poverty measure						
Using GDP per capita						
	Constant	7.74	17.053	0.000	0.45	0.95
All	GDP per capita	-0.50	-8.697	0.000		
Low	Constant	7.99	12.988	0.000	0.48	2.12
inequality	GDP per capita	-0.52	-6.275	0.000		
High	Constant	6.30	8.731	0.000	0.26	1.44
inequality	GDP per capita	-0.35	-3.933	0.000		
Using GDP per worker						
	Constant	8.13	18.081	0.000	0.50	0.87
All	GDP per worker	-0.49	-9.646	0.000		
Low	Constant	8.73	16.482	0.000	0.64	2.22
inequality	GDP per worker	-0.54	-8.695	0.000		
High	Constant	6.60	9.347	0.000	0.31	1.49
inequality	GDP per worker	-0.34	-4.444	0.000		

Table 14 cont'd: Estimation of Poverty Incidence to Labour Productivity Elasticities, using log differences

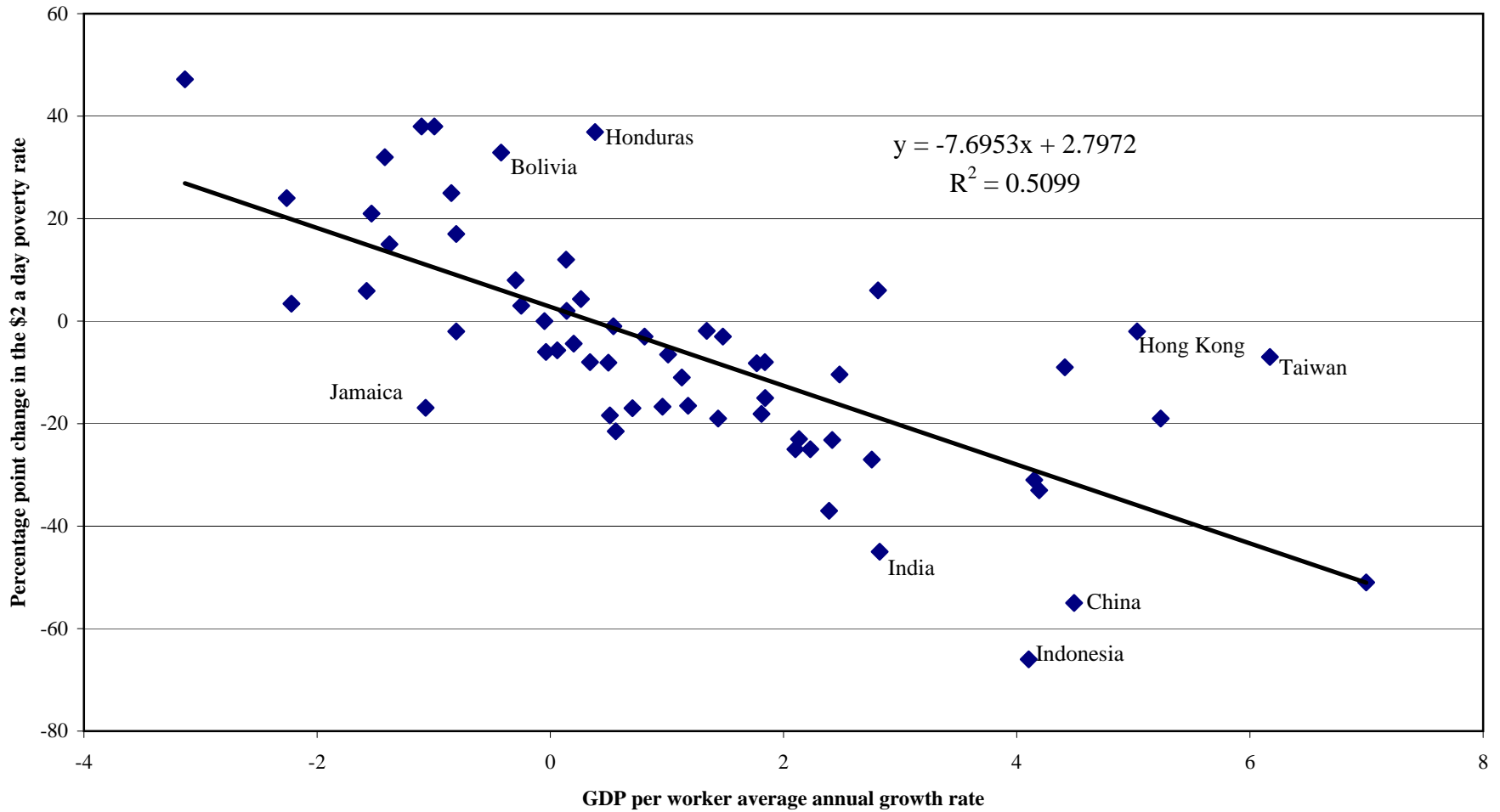
		Coefficient	t-statistic	Prob.	R-Squared	Durbin-Watson
Using \$1 a day poverty measure						
Using GDP per capita						
All	Constant	0.04	1.118	0.268	0.09	1.75
	GDP per capita	-2.46	-2.649	0.010		
Low inequality	Constant	0.02	0.406	0.688	0.03	2.11
	GDP per capita	-1.38	-1.026	0.313		
High inequality	Constant	0.03	0.568	0.574	0.13	1.75
	GDP per capita	-3.35	-2.234	0.033		
Using GDP per worker						
All	Constant	0.05	1.488	0.142	0.23	1.70
	GDP per worker	-3.39	-4.454	0.000		
Low inequality	Constant	0.08	2.499	0.018	0.42	2.14
	GDP per worker	-3.17	-4.692	0.000		
High inequality	Constant	0.01	0.242	0.811	0.24	1.79
	GDP per worker	-4.93	-3.162	0.003		
Using \$2 a day poverty measure						
Using GDP per capita						
All	Constant	0.02	0.927	0.357	0.07	1.77
	GDP per capita	-0.94	-2.197	0.032		
Low inequality	Constant	0.01	0.437	0.665	0.04	2.25
	GDP per capita	-0.56	-1.148	0.260		
High inequality	Constant	0.01	0.465	0.645	0.08	1.72
	GDP per capita	-1.24	-1.701	0.099		
Using GDP per worker						
All	Constant	0.02	1.161	0.250	0.16	1.79
	GDP per worker	-1.26	-3.510	0.001		
Low inequality	Constant	0.03	2.095	0.045	0.37	2.33
	GDP per worker	-1.09	-4.264	0.000		
High inequality	Constant	0.01	0.232	0.818	0.16	1.71
	GDP per worker	-1.91	-2.466	0.019		

Chart 1: Relationship Between GDP per Worker Growth and the Change in the \$1 a day Poverty Rate in Developing Countries, 1970-1998



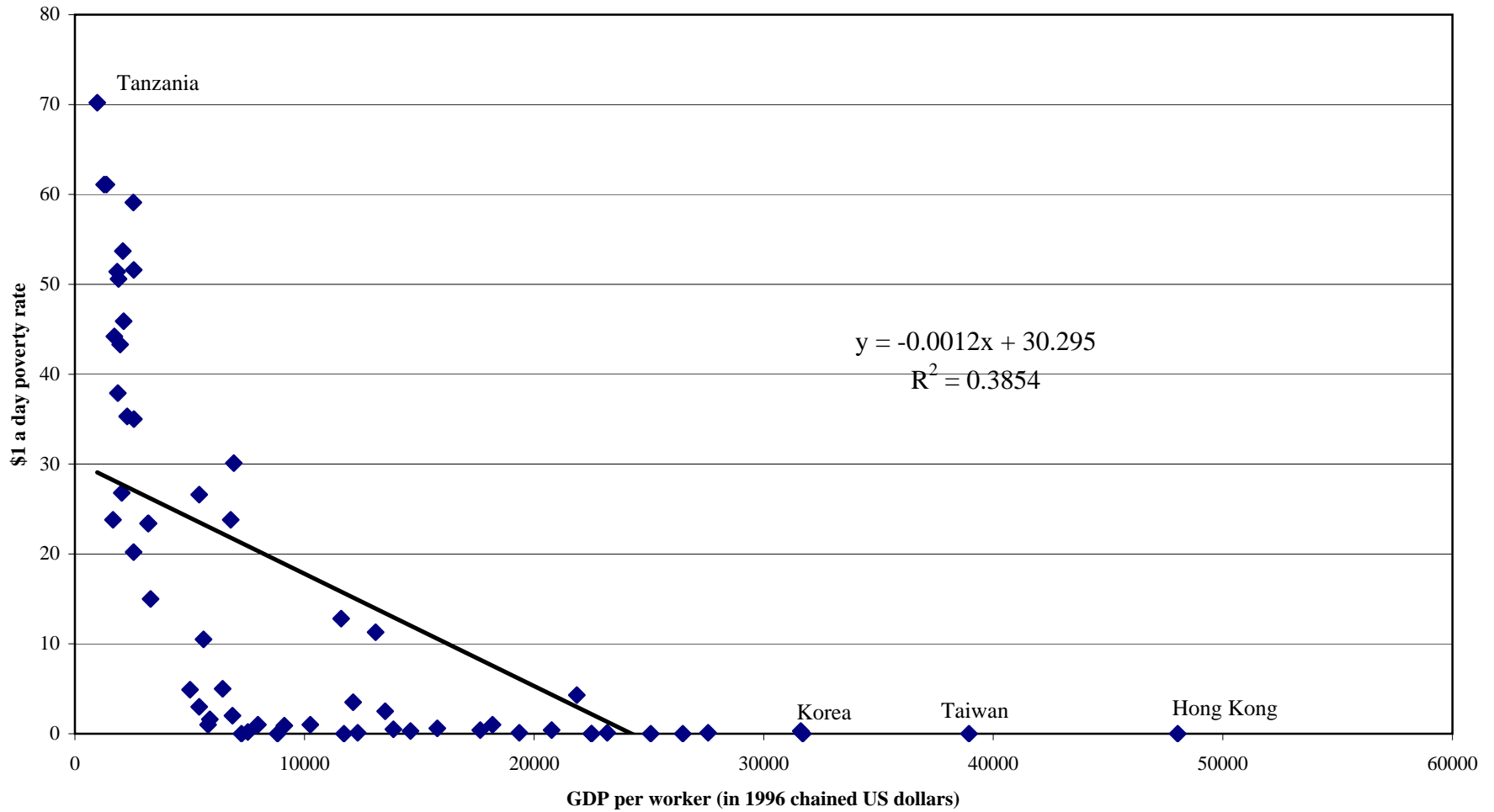
Sources: Alan Heston, Robert Summers and Bettina Aten. *Penn World Table, Version 6.1*. Center for International Comparisons at the University of Pennsylvania (CICUP), October 2002.
 Xavier Sala-i-Martin. *The World Distribution of Income*. NBER Working Paper 8933, © 2002.

Chart 2: Relationship Between GDP per Worker Growth and the Change in the \$2 a day Poverty Rate in Developing Countries, 1970-1998



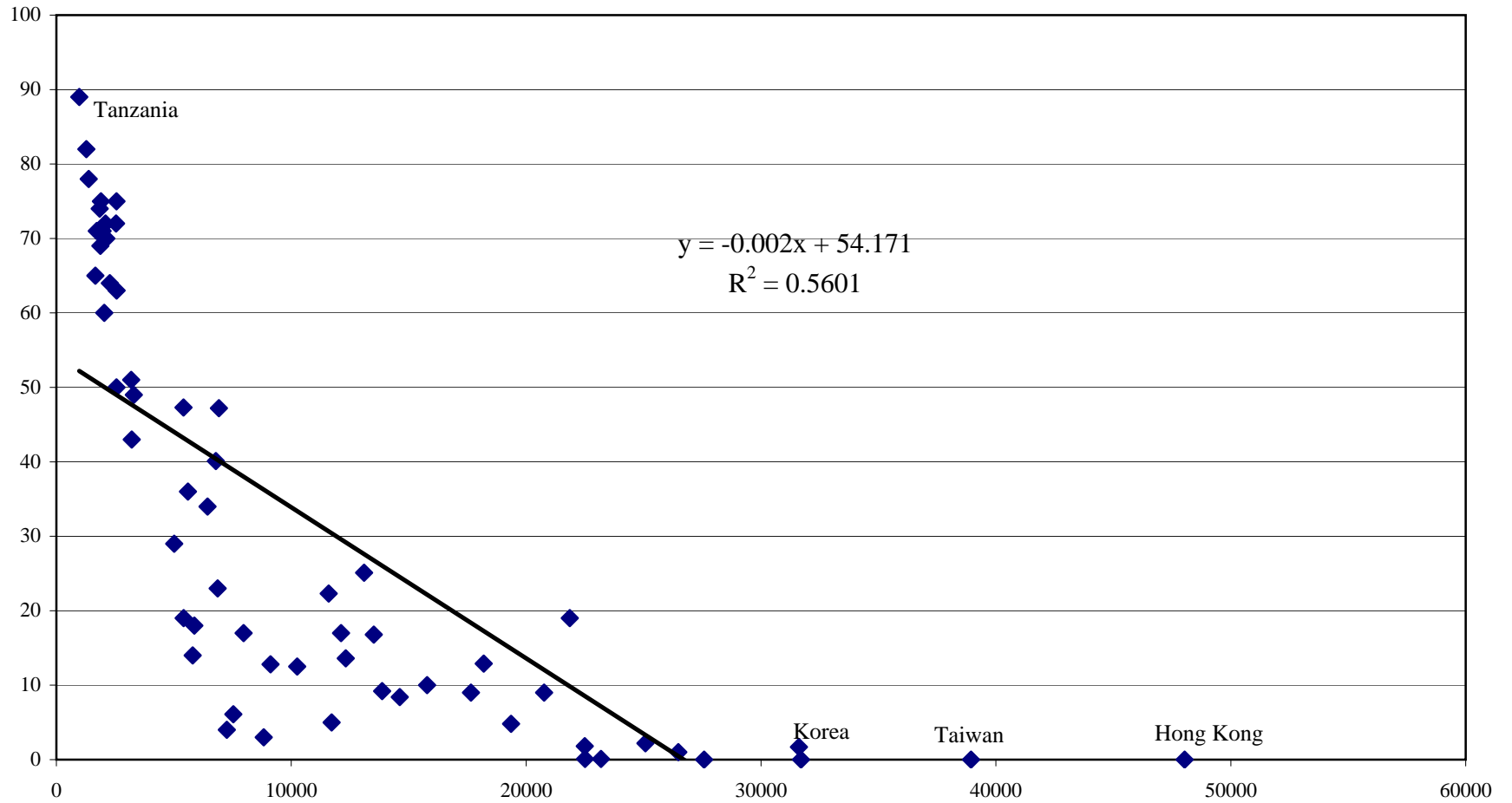
Sources: Alan Heston, Robert Summers and Bettina Aten. *Penn World Table, Version 6.1*. Center for International Comparisons at the University of Pennsylvania (CICUP), October 2002.
 Xavier Sala-i-Martin. *The World Distribution of Income*. NBER Working Paper 8933, © 2002.

Chart 3: Relationship Between GDP per Worker and the \$1 a day Poverty Rate in Developing Countries, 1998



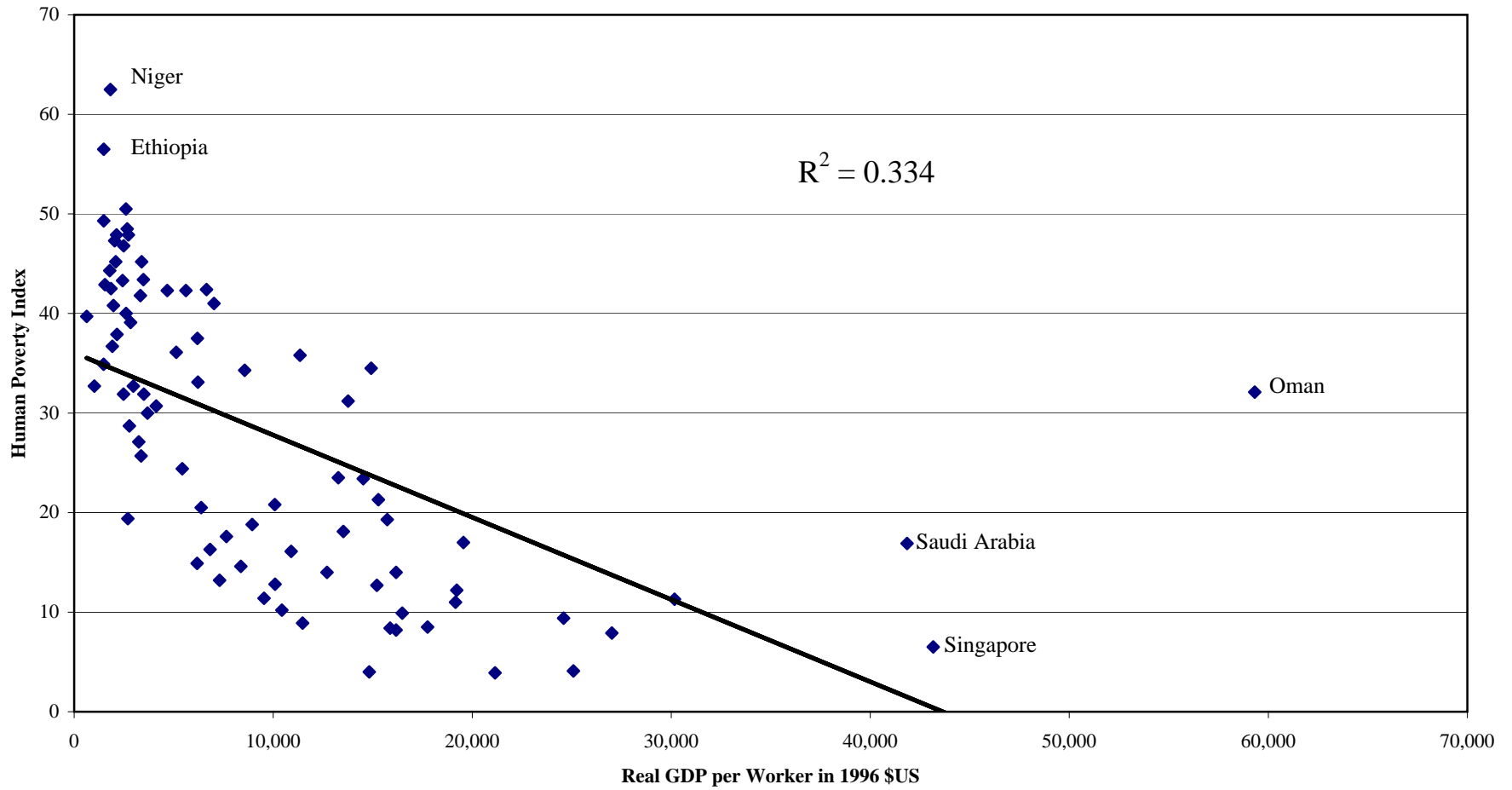
Sources: Alan Heston, Robert Summers and Bettina Aten. *Penn World Table, Version 6.1*. Center for International Comparisons at the University of Pennsylvania (CICUP), October 2002.
Xavier Sala-i-Martin. *The World Distribution of Income*. NBER Working Paper 8933, © 2002.

Chart 4: Relationship Between GDP per Worker and the \$2 a day Poverty Rate in Developing Countries, 1998



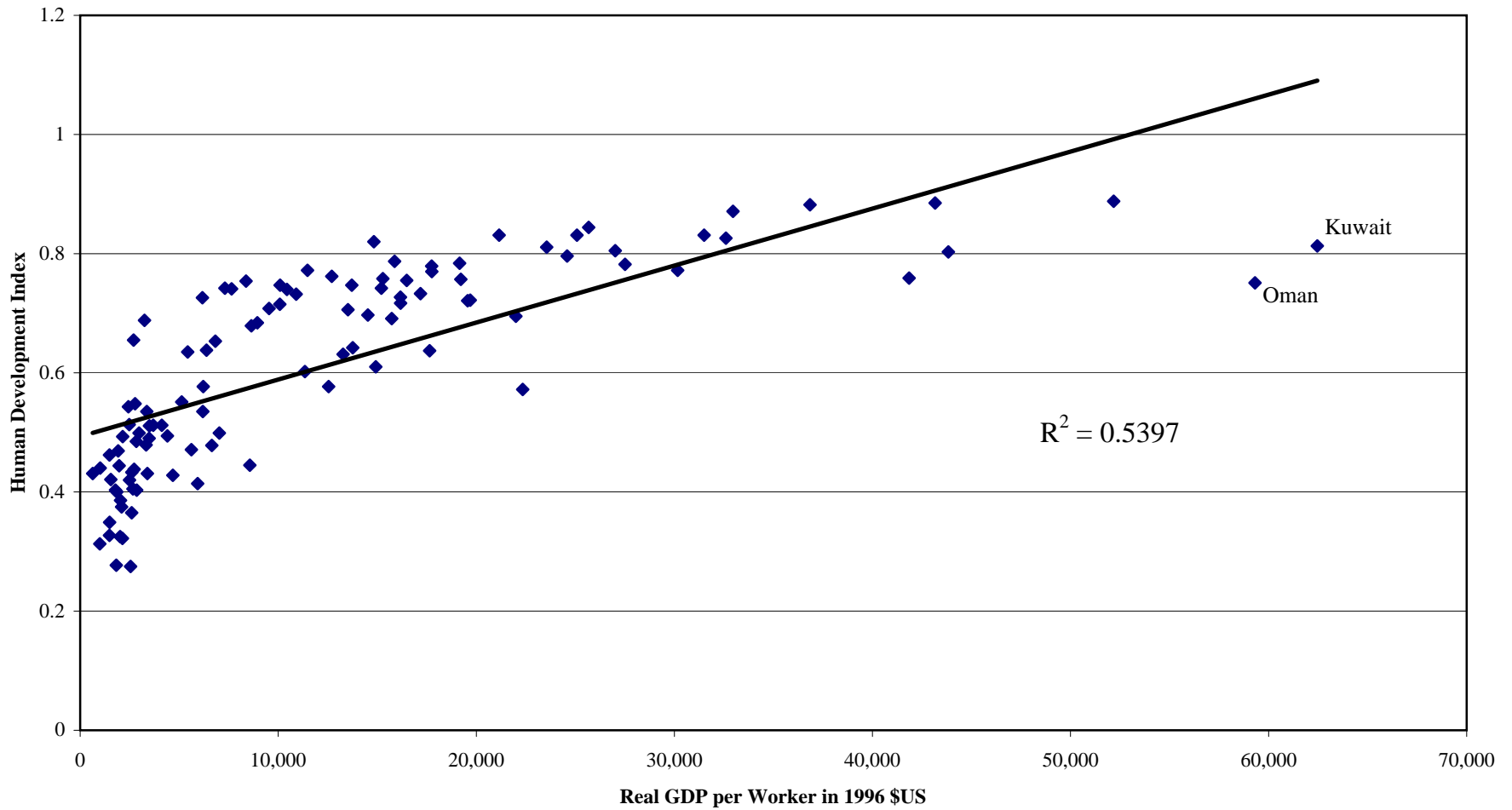
Sources: Alan Heston, Robert Summers and Bettina Aten. *Penn World Table, Version 6.1*. Center for International Comparisons at the University of Pennsylvania (CICUP), October 2002.
Xavier Sala-i-Martin. *The World Distribution of Income*. NBER Working Paper 8933, © 2002.

Chart 5: Relationship Between Real GDP per Worker and the Human Poverty Index in Developing Countries, 2000



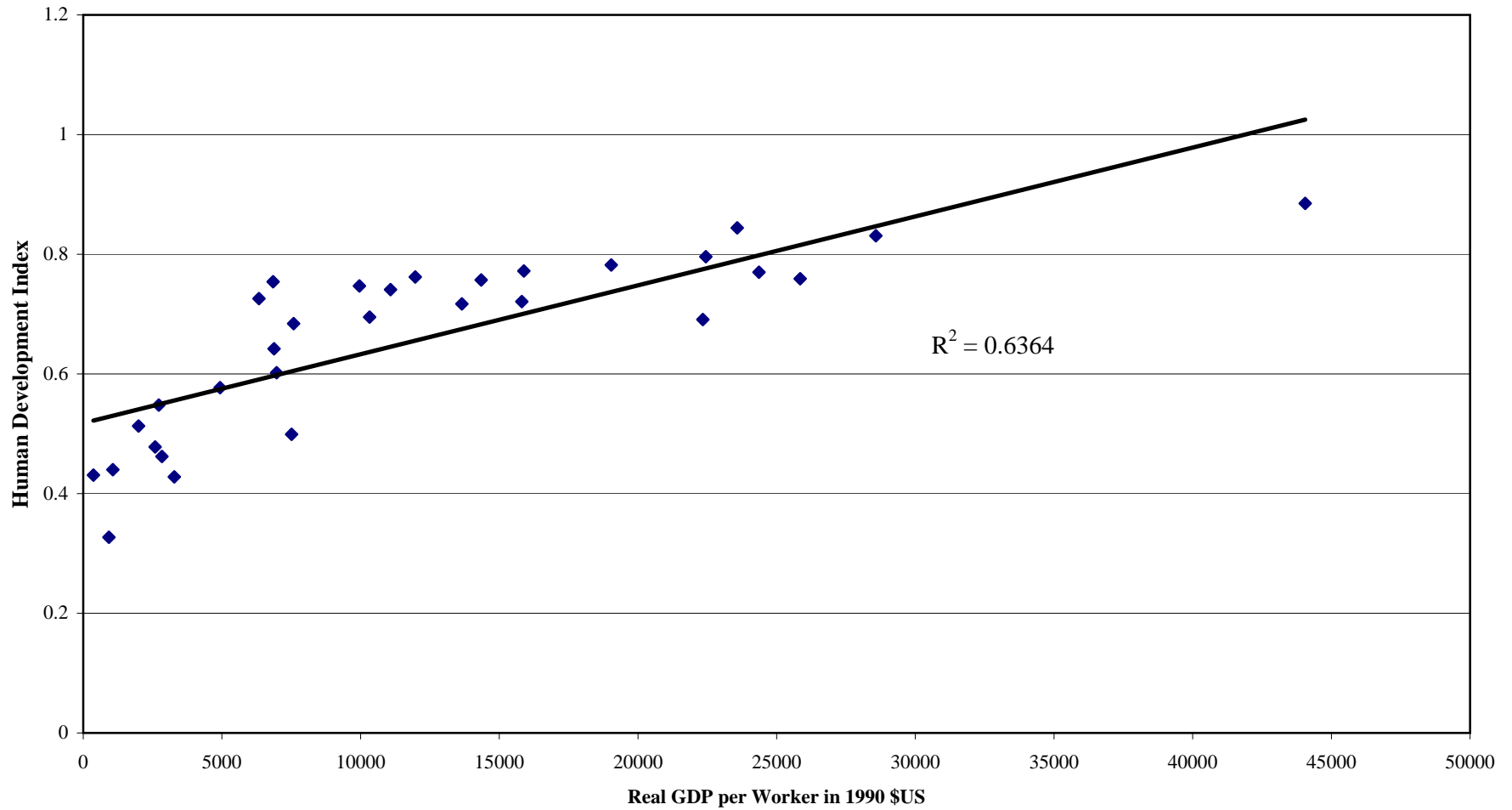
Source: Alan Heston, Robert Summers and Bettina Aten. *Penn World Table, Version 6.1*. Center for International Comparisons at the University of Pennsylvania (CICUP), October 2002.
United Nations Development Programme. *Human Development Report 2002*. New York, Oxford University Press, 2002.

Chart 6: Relationship Between Real GDP per Worker and the Human Development Index in Developing Countries, 2000



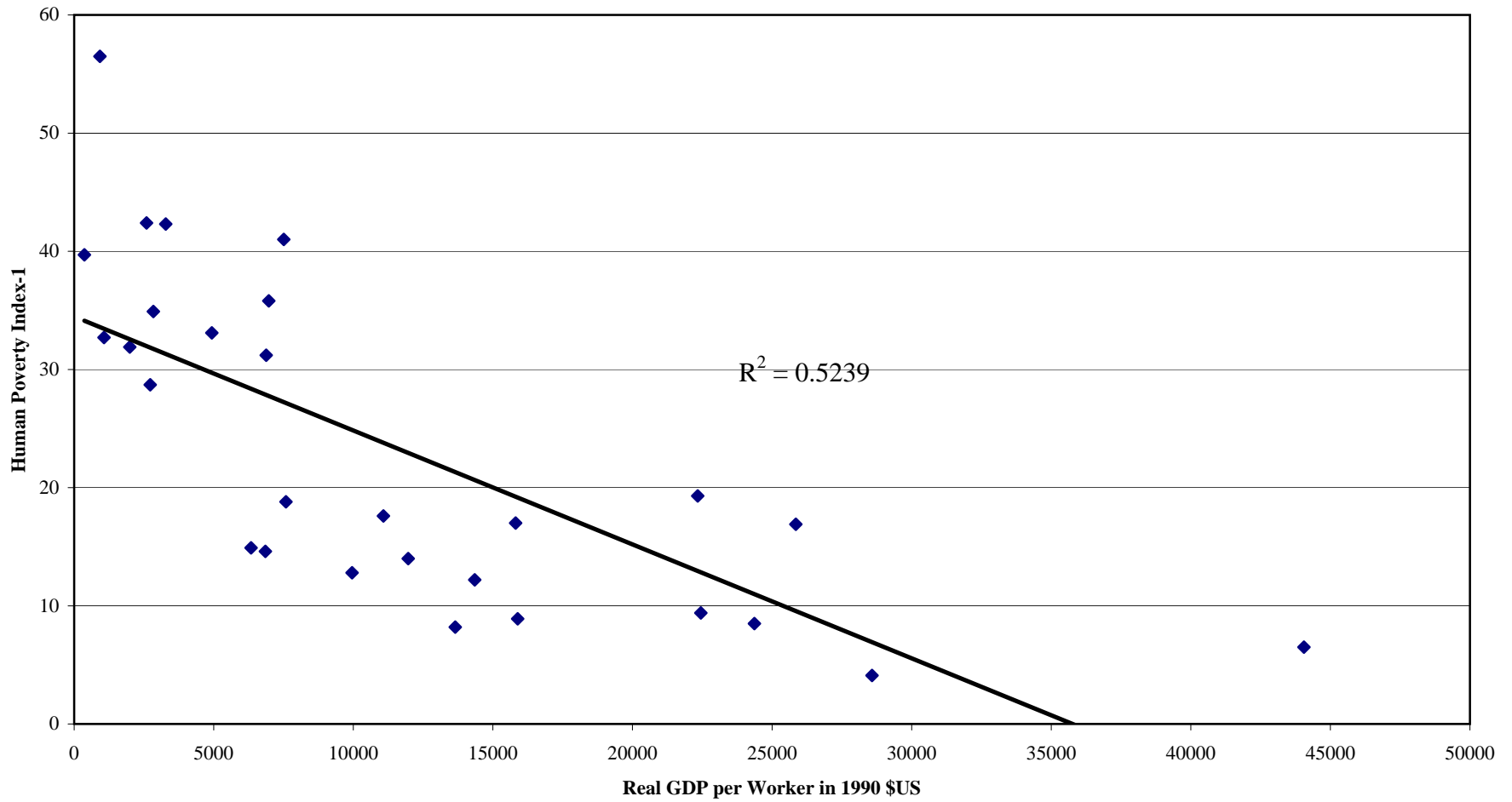
Source: Alan Heston, Robert Summers and Bettina Aten. *Penn World Table, Version 6.1*. Center for International Comparisons at the University of Pennsylvania (CICUP), October 2002. United Nations Development Programme. *Human Development Report 2002*. New York, Oxford University Press, 2002.

Chart 7: Relationship Between Real GDP per Worker (GGDC Estimates) and the Human Development Index in Developing Countries, 2000



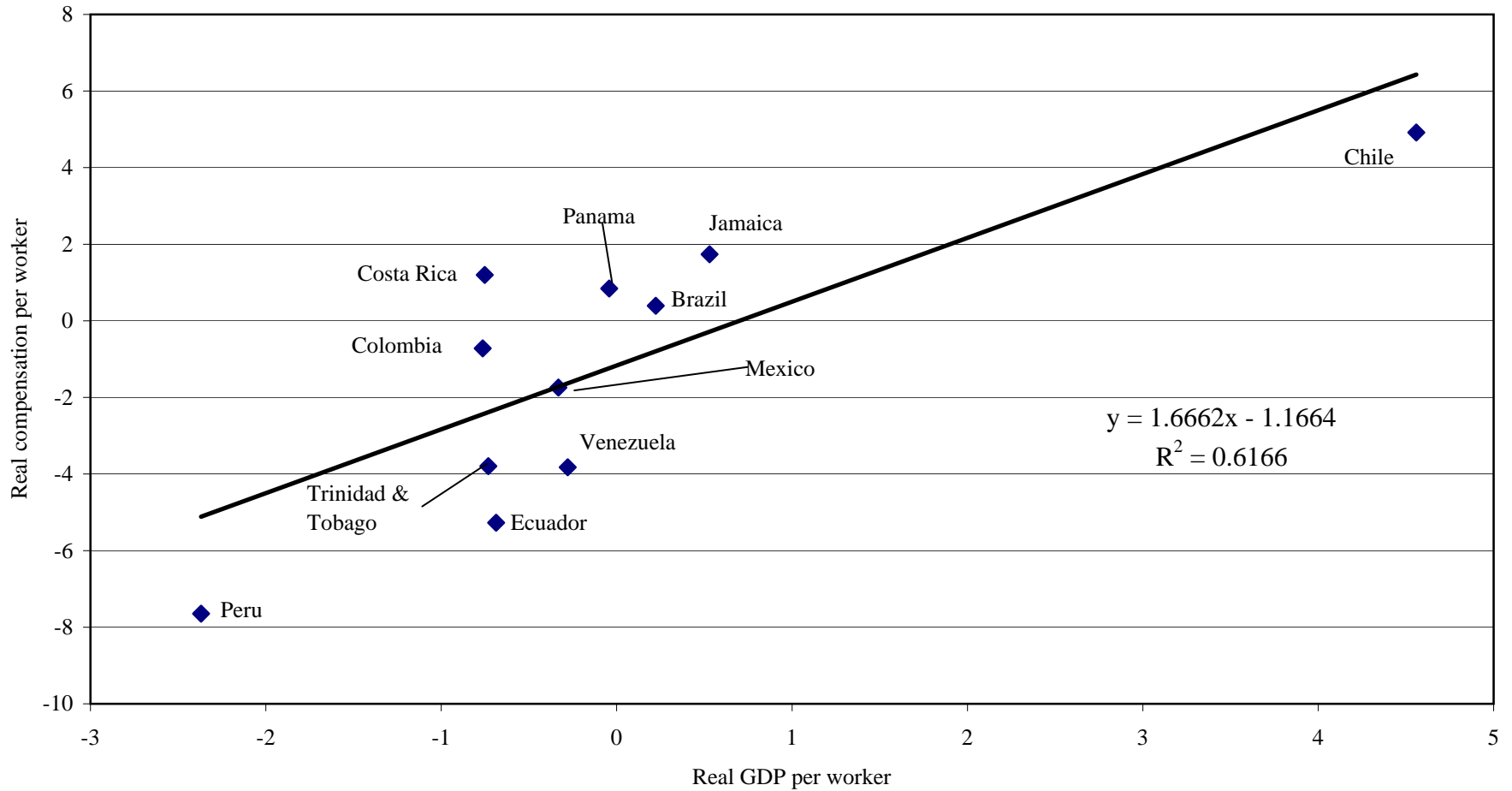
United Nations Development Programme. Human Development Report 2002. New York, Oxford University Press, 2002. Groningen Growth & Development Centre: Total Economy Database. Available at www.eco.rug.nl/ggcd/dseries/totecon.shtml, March 7, 2003.

Chart 8: Relationship Between Real GDP per Worker (GGDC Estimates) and the Human Poverty Index in Developing Countries, 2000



United Nations Development Programme. Human Development Report 2002. New York, Oxford University Press, 2002. Groningen Growth & Development Centre: Total Economy Database. Available at www.eco.rug.nl/ggcd/dseries/totecon.shtml, March 7, 2003.

Chart 9: Relationship Between Real GDP per Worker and Real Compensation per Worker Average Annual Growth Rates in Latin America for the 1980-1998 Period



Sources: Compensation: Economic Commission for Latin America and the Caribbean. Statistical Yearbook for Latin America and the Caribbean 2001. United Nations, 2002. Available at www.eclac.org. Inflation Rates used to deflate nominal compensation are from: International Monetary Fund World Economic Outlook Database September 2002. available at www.imf.org. Real GDP per Worker and Employment used to calculate real compensation per worker are from Alan Heston, Robert Summers and Bettina Aten. Penn World Table, Version 6.1. Center for International Comparisons at the University of Pennsylvania (CICUP), October 2002. Available at <http://pwt.econ.upenn.edu/>. Note: Average annual growth rates for Chile, Jamaica and Venezuela are for the 1985-1998 period and for the 1980-1995 period in Ecuador.